

Inn Mei Himnak

MEI RUNVENNAK CU
KAA TINHMI A SI



Inn i mei runvennak caah tuah dingmi pawl



**FIRE
RESCUE**
VICTORIA



Inn ah mei himnak thawk

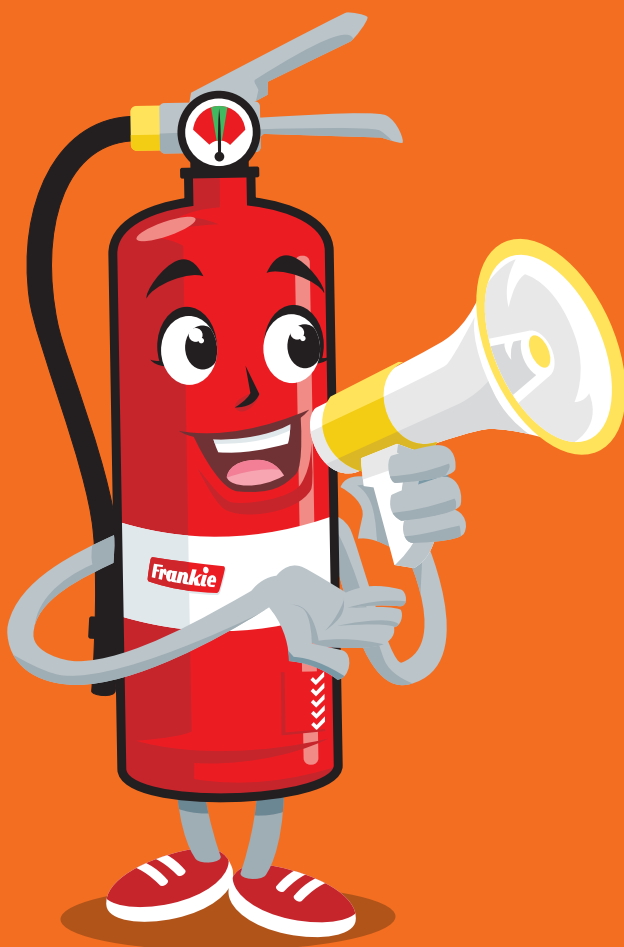
Na inn i meikanghnak cu ngaihchiat lungkuainak a si kho i hmih khawhlomi hmanh a si kho. Voikhat meikangh hram a thawk ahcun rianrang tein nangmah le na dawtmi pawl sin ah ttihnunnak kha a karh lai. Mei ttihnunnak kha a tak in a um tikah, nangmah pumpaak, na innchungkhar le na inn runven khawhnak lam tampi a um.

Victoria mei le chanchuahnak lei rianttuan piaknak pawl nih innkangh i him te'n um ningcang pawl le thawngthanhnak pawl cu Victoria i a ummi minung pawl sin ah phawtzamhnak hmangin mibu pawl kha him tein chiah dingah pumpeknak a ngeimi an si.

Ngakchia no, kumkhua upa, pumtlanmlinglo le kuak a zumi pawl cu an inn mei nih a kangh tikah hliamhma putnak ah ttihnung deuh an si asilole nunnak ttihnung deuh an si.

Hi ca-uk pante i ruahnak cheuhnak nih nan inn meikanghnak in runven khawhnak tuahto ning le nangmah le na dawtmi hna him tein chiah ning cawn dingah an bawmh lai. Nan inn him tein chiahnak le mei a kangh lio ah zeidahtuah ding a si ti hngalhnak nih nunnak le thihnak karlak ah a danter khawh.

Hi hmelchunhnak caah a biapimi himnak caah biachimmi asilole a tawinak in langhtermi kha zoh. !



**HI, KEIMAH CU FRANKIE
KA SI I HI PAWL HI MEI
HIMNAK CAAH TUAH DINGMI
A BIAPI TUKMI A SI:**

- Meikhu rim a caatu ngei law hmaan tein chek lengmang.
- Inn i mei lei ttihnung pawl kha ttha tein zoh.
- Mei a kangh tik i zaamnak timhtuahnak ngei law hmaan tein cinh lengmang.
- Na inn ah mei a kangh ahcun, a lengah chuak law, a leng ah um, cun Tungngiah Pathum (000) chawn.

Meikanghnak cu a rang taktak!



Atu thawk in, meikhu rim a caatu nih mei a dothlat cang i innchungkhar kha hliplaunak a pek cang hna.



Ralrinnak pek loin, mei cu chek lo in a um. Rianrang in a tlaih lai i sivai a ngeimi meikhu rim a hung chuak lai.



Meikanghnak nih 800 degrees Celsius lonh in a kangh khawh. Inn chung i a ummi thil vialte a kaang kho dih i khaan dang pawl zongah mei a karh kho men.

Meikhu rim a caatu



! Meikhu rim a caatu rianttuannak lawng nih nunnak a kham.

Meikhu rim a caatu ngeih lo ahcun umnak inn meikanghnak nih thihnak pek ding lam tamdeuh a um.

Meikhu rim a caatu nih tuan te ah ralrin peknak an ngeih lai i him tein zaam dingah caan an pek lai. Na inn i a dot kip ah a tlawmbik meikhu rim a caatu pakhat nan ngeih a hau.

Meikhu rim a caatu kong tamdeuh theihnak dingah frv.vic.gov.au and cfa.vic.gov.au ah zoh.

Kumkhua upa deuh pawl asilole pumtlamting lomi nih hmanmi cheukhat pumpaak ralrinpeknak lei riantuan piaknak pawl cu meikhu ralrin peknak pawl links ah aa tel kho. Hihi cu rian an tuan piaktu he chek a herh lai. Hnachet pawl asilole khua theih aa harhmi pawl caah a hleiin sermi meikhu ralrinpeknak pawl a ngah. Thawngthanmi tamdeuh hmuhnak caah hika ah zoh expression.com.au ah zoh.

LAU HLAH, TUAH DING
KA CHIMMI HI ZUL:

- Meikhu a caatu kha 9-volt battari nan ngeih ahcun, kum fatin battari kha thleng.
- Meikhu rim a caatu khuhnak a leng hrawng ah kum khat ah voikhat a tlawmbik ttawl.
- Nan meikhu rim a caatu nih bim (beep) tiah voikhat, atu letu a aw a chuah ahcun, battari tun a herh asilole meikhu rim a caatu remh le thlen a hau bak.



! Australia mei lei rianttuanpiaknak nih mileng khaan, innluhnak varenda le ihnak khaan ah meikhu a caatu bunh cio dingah duksaknak a ngei.

Meikhu rim a caatu kha battari kum 10 a nguhmi bunh.

Victoria mei le chanchuahnak lei rianttuan piaknak nih meikhu rim a caatu pawl kha pakhat le pakhat ipehtlai hna seh ti an duh, cu ticun ranrinnak pakhat pakhat pekhat a tuah tikah meikhu rim a caatu pawl kha a aw an chuah lai.

Naa hngilh tikah, na hnar nih a rim a theihmi kha a tlau. Meikhu rim a caatu nih mei a kangh i a khu a um ahcun ralrinnak an pek lai.



Chek dingah, thla fatin meikhu a caatu a tawlei hneksaknak kha hmet law, 'beep, beep, beep' tiin a awn tiang kha hngak. Beep tiah a aw a chuah ahcun, a sullam cu na meikhu rim a caatu kha rian a ttuan ko tinak a si.



Lithium Battari unit he kum 10 fatin meikhu rim a caatu kha thleng.



Inn dot kim siling cungah chia hna law vanpang he a tlawmbik 30cm ihlat seh.

Inn meikangh i zaamnak timlamhnak

Zeibantuk inn phun i na um zongah, mei a kangh ahcun zeitindah tuah ding a si ti hngalh kha nangmah caah a biapi tuk.



MEI A KAANGMI NA HMUH
AHCUN, A LENGAH CHUAK LAW
A LENGAH UM

- 🔥 A lengchuahnak hmun kha thiang hirhiar te'n chia.
- 🔥 Inn chung i na um tikah tawh pawl cu a zungzal in innka kharmi pawl le himnak caah tuahmi chungah chia peng, cu ticun mei a kangh tikah na zaam khawh lai.



! Lakhruak thilcang a um tik i inn meikanghnak in zaamnak timhtuahnak ngeih kha a biapi tuk.

- A tanglei ah ttum law meikhu umlonak ah um.
- Na kal pah khan midang kha ralrinnak pe hna.
- Tuah dingah a him ko ahcun, na chuah in innka khar ta.
- A leng ah chuak law a leng ah um.
- Na inn leng i a himnak hmun ah um, tch. Cakuat chiahnak kuang asilole ke in kalnak lam.
- Tungngiah Pathum (000) chawn le MEI AKANGHMI caah bawmh hal.



Inn i mei a kangh tikah zaamnak lei timlamhnak kha timhtuah cianak le cinhnak nih na nunnak kha a kham khawh, cahmai 19 ah zoh.



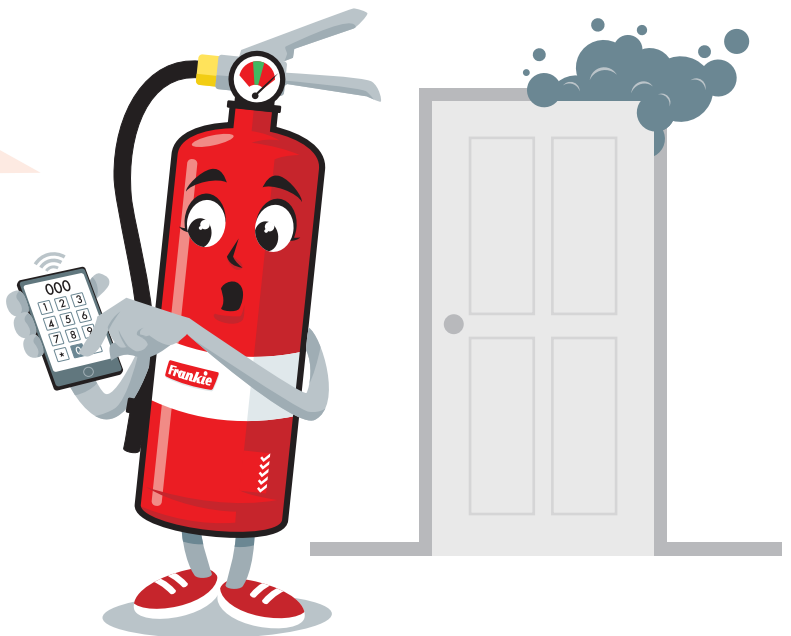
Nan inn nambar kha lam in hmuh khawhnak dingah fiang tein chia.



Inn dot sang pi ah nan um ahcun, khoika zawn ah dah meikangh tikah chuahnak a si ti kha hngal law hleihlaak kha a zungzal in hmgang.

NA ZAAM KHAWH LO AHCUN...

- 🔥 A him ahcun, mei a kanghnak khaan innka kha khar.
- 🔥 Meikhu le mei he a hlat khawh chung hlatnak ah um.
- 🔥 Tungngiah Pathum (000) chawn, MEI KANGHNAK caah bawmh hal law a leng chuah dingah bawmh na herh kha chim – na fon chia hlah.



Lektrik he aa petlaimi

Lektrik he aa pehtlaimi mei cu inn i hman bikmi mei phun pakhat a si.

Lektrik mei he aa pehtlaimi himnak kong tamdeuh theihnak caah Mei Himnak Victoria vuapsaih esv.vic.gov.au ah zoh.

**LEKTRIK MEI A SI AHCUN,
HIM TEIN UM LAW CHEK**

- 🔥 Lektrik mei thilri na hmanmi dihlak kha Australia nih Tahfung a ngeihmi a tlinhmi si hrimhrim lai asilole Upadi ning in Chuahmi Hmelchuhnak a ummi (RCM) a si hrimhrim lai.
- 🔥 Meitunnak pawl cungah thilrit tuk chiahnak in runvennak ngei law zehmanh khuh hlah, tch. chantling le puanlummi.





! Nan inn i a ummi Lektrik mei thilri pawl ah mei peknak, meitunnak, thawn khawhmi meitunnak pawl, meitunnak kuang le meihri aa kualmi aa tel kho.

Lektrik mei hmanmi thilri pawl le tunnak pawl hrawng ah pangka chiah kha a biapi tuk i a cung asilole a pawngkam i thilri a ummi pawl kha thial hna.

Mei a rawkmi asilole meitunnak a rawkmi, meihri asilole meithilri remh dingah Lektrik lei ah a thiam bakmi lawng hmang hna.



Lektrik lei meihri cu a awngkua pakhat ah hri pakhat lawng sawh. Meitunnak kuang pawl kha a tamtuk hmang hlah. Meihri sawhnak pakhat a umnak ah 'aa thuahin' 'piggyback' in sawh hlah asilole pehtlaihnak pahnih a ummi hmang.



Lektrik mei bunh bu in sam ro ternak pawl, sam din ter nak pawl le laptop kompiotta tibantuk pawl kha a tang danhmi a kaang khomi a umnak hmun ah chia ta hlah.



Lektrik mei tunnak a ttha tiah fehtermi lawng hmang. A tang danhmi a kaang kho lomi thil a umnak ah mei tun law na tun dih khawh lecaangka in phoih zokzok tthan.



Thil ro ternak nih a kikmi aa helmi kha a dir hlan ah lim ta zungzal seh. Hman hlaan fatin hnawm a hlonhtu kha thianh.

Coka le rawlchuannak

Coka hi inn chungah meikanghnak a
cannakbik khaan a si.



Rawlchuan in kaltaaknak cu coka i
mei a kanghnak aruang bik a si.





RAWLCHUAN LIO AH ZOH PENG

- 🔥 Inn in nan chuah hlaan asilole nan ih hlaan ah rawlchuannak (stove), gas in rawlchuahnak (cooktop), changreu rawhnak le a dang rawlchuannak pawl kha hmih ta dih.
- 🔥 Datsi asilole athau a kanghmi hmih dingah ti kha zeitik hmanh ah hmang hlah.
- 🔥 Coka ah ngakchia pawl kha ruahnak cheu zungzal hna.



Mei nih a kang khawh dingmi thil pawl kha rawlchuannak le a lummi a umnak hmun in a tlawmbik 1 metre a hlaatnak ah chia hna.



Mei hmihnak le mei puan cu coka kipah chiah hrimhrim ding a si. A him ko tiah na ruah lawngah hmang.

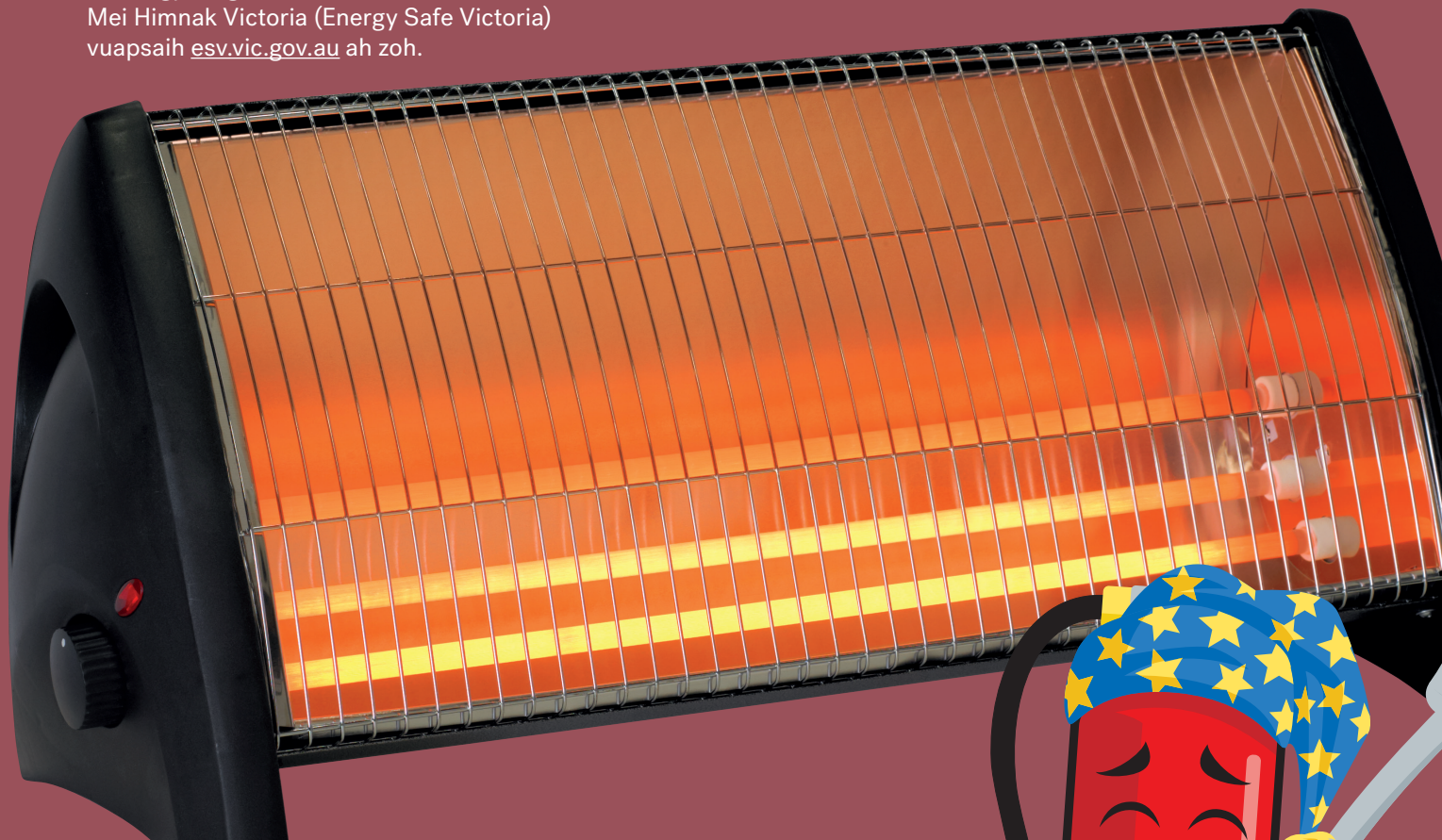


Rawlchuahnak (stovetop), sarawhnak, changreu rawhnak, sarawhmi chuahnak cengeh le rawlchuannak pawng hrawng kha a thau le datsi um hrimhrim hlah seh.

A sami

Sattertu pawl cu meikanghnak aruang bik a si, ahlei in khuasik thla chungah.

Thawngpaang tam deuh theihnak caah
Mei Himnak Victoria (Energy Safe Victoria)
vuapsaih esv.vic.gov.au ah zoh.



**NA IH HLAN AH ALUMMI
KHA HMIH TA**

- 🔥 Inn i a lumnak a kalnak peng pawl le pep pawl cu sehlei a thiammi nih hman tein thianh seh law zoh seh.
- 🔥 Inn in na chuah hlan asilole na ih hlan ah mei aa awngmi hmit dih law a lummi vialte phih ta dih.



Meikaunak a hmailei ah mei khamnak a zungzal in hmang.

1m
a tlawmbik

1m

Mei nih a kangh khawh dingmi thil pawl kha a lummi a umnak hmun in a tlawmbik 1 metre a hlaatnak ah chia.



Hlonh hlan ah vutcaam pawl kha a daih le daih cang lo kha chek.



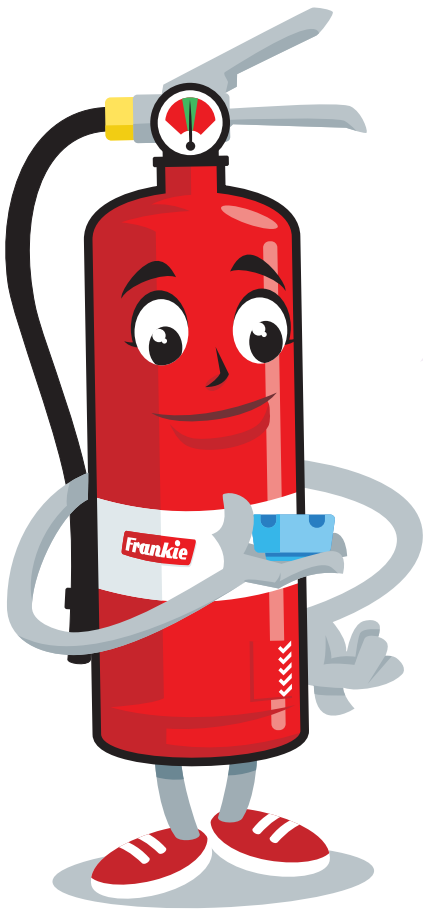
Lumtertu pawl le mei awnmi pawng um tikah ngakchia pawl kha felfai tein zohkhenh an herh.

Kuak le mei-alh pawl

Kuak pawl, phazawngdan pawl, a hmui vanmi (ahmuai taing) le meivannak ah hmanmi zinan pawl nih meikanghnak a chuahpi khawh. Inn in chuah hlan asilole ih hlan ah meivan mi pakhat khat asilole kuak kha a zungzal in hmit ta.

- ! Phazawngdan, a hmui vanmi (ahmuai-ttaing) le zinan hmangin vanmi mei pawl cu mei nih a kangh khawh lomi aa remnak hmun lawngah hmang.



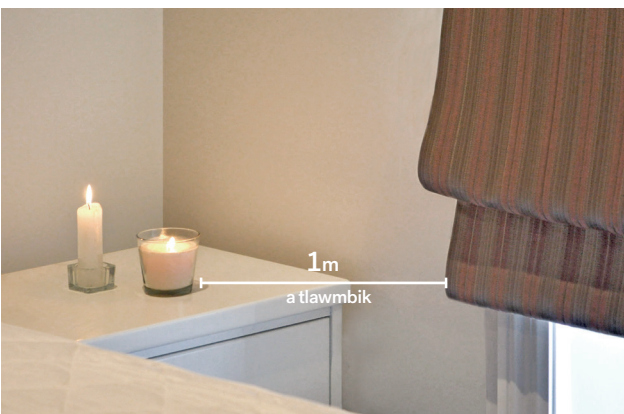


IHMATTHAH, LANHTAAK HLAH

- 🔥 Ihkhaan ah kuak zu hlah. Ihkhaan i kuakzuknak cu mei a kangh i thihnak a chuahpimi aruang lakah pakhat a si.
- 🔥 Mei-alh pawl cu ttha tein zohkhenh peng ding a si.
- 🔥 Meittek, meilah, phazawngdan, ahmui vanmi (ahmuai-taing) le meikaunak zinan pawl cu ngakchia pawl phak lonak ah chia hna.
- 🔥 Mei-alh a chuahmi phazawngzan van lo in zeidang hman dingin ruat, tch. battari hmanmi mei.



Kuak kha a chiahnak a ritmi, a thukmi ah hmih law hlonh hlan ah a lengah um seh.



Thlalangawngka zar pawl le a dangdang thil pawl cu mei-alh nih a tlaih khawhnak hmun in a tlawmbik 1 metre a hlatnak ah chia hna.



! Iralrin lo in kuakbul pawl hlonhnak nih inn DOT TAMPI MEI KANGHNAK a chuahpi.

Ihmatthah, lanh taak hlah; a hlei in inn dot tampi i na um ahcun.

Inn leng

Nan inn ah innleng donhhlei, dum, inn hmete, mawttaw chiahnak asilole inntual a um men ko lai. Mei cu ket dur (gas cylinders), datsi pung le a dang khemikal (chemical) tibantuk thil a um ruangah rang tuk in a ngan kho.





! Buan bare pawl a um lo, harnak pawl a um ve lo!

BBQ nan tuahnak ket (gas) tung kha a rawk lo bakmi si seh law aa pehnak pawl zong kha fek seh.



Vawlei i a thau a tlami pawl telhchih in nan BBQ rawhnak le a thaupawl aa benhmi kha thiang tein chia peng.



50 cm
a tlawmbik

BBQ cu a leng lawngah tuah uh law nan haukulhmi he a tlawmbik 50cm a hlatnak ah tuah uh. Rawl na chuanmi kha zeitik hmangah kaltaak hlah.

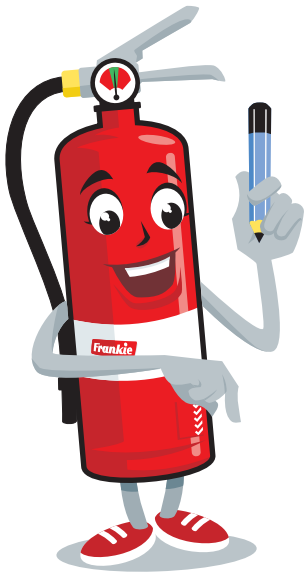
NA KHEMIKAL (CHEMICAL) PAWL KHA HIM TEIN CHIA HNA

- 🔥 Na inn hmete asilole mawttaw chiahnak ah, a puak khomi thil pawl le ngakchia phak khawhlonak hmun in datsi tibantuk kha him tein chia law khemikal lei thil a simi pawl cu fim hna.
- 🔥 Na herh ti hna lo ahcun, khemikal (chemical) pawl kha hmaan te'n le him te'n hlonh hna. Thawngthanhmi tamdeuh ngahnak caah sustainability.vic.gov.au/detoxyourhome ah zoh.

Mei lei himnak cheknak cazin

- Meikhu caak a hmangmi kha chia law hmaan tein chek lengmang.
- Inn i mei a kangh tikah zaamnak lei timlamhnak kha timhtuah cianak ngei law cinhnak ngei.
- Rawlchuan lio ah zoh peng.
- Lektrik mei hman tikah meihri bunhnak kuang ah meihri pakhat (mei pehnak pahnih a ummi si loin) lawng sawh ding.
- Lengchuahnak hmun kha thiang hirhiar in chia.
- Mei nih a kangh khawh dingmi thil pawl kha a lummi a umnak hmun in a tlawmbik 1 metre a hlaatnak ah chia hna.
- Meittek, meilah, phazawngdan, ahmui vanmi (ahmuai-taing) le meikaunak zinan pawl cu ngakchia pawl phak lonak ah chia hna.
- Khemikal (chemical) pawl cu a puak khomi thil pawl sin in a hlatnak hmun ah him tein chia law ngakchia nih an phak khawh lonak ah chia.
- Inn chung i na um tikah tawh pawl cu a zungzal in innka kharmi pawl le himnak caah tuahmi chungah chia peng, cu ticun mei a kangh tikah na zaam khawh lai.





! Inn mei a kangh tikah zaamnak ding timhtuahnak ngeih kha a biapi tuk, cu ticun lakhruak thilcang a can hlan ah nan inn in a lengah rang tein chuah ningcang kha na hngalh lai.

Na umnak leihsa

.....

.....

.....

A him mi i ton bia ruahnak hmun

.....

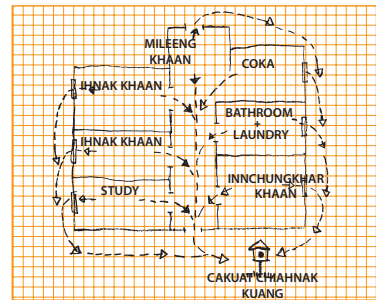
.....

.....

A leng chuahnak ding timhtuahnak ngei. Hi a biapimi pawl hi ichingchiai:

- Khaan kip in chuahnak lam pahnih a um kha hngal.
- Mei kanghmi le meikhu a kenkip a kalnak ding runven dingah innka khar.
- Meikhu chungah a tanglei ah idok.
- A leng ah chuak. Midang pawl kha ralrinnak pe hna.
- A leng na chuah tikah, a lengah um. A chunglei ah kir tthan ti hlah.
- Inn hmai i ton lengmang tawnnak hmun ah um: tch. Cakuat chiahnak kuang. Meihmihtu pawl an rak phak hlan hngak hna.
- A naihnak bik hmun i a ummi fon in Tungngiah Pathum (000) chawn: tch. nan inn pa inn.

Inn mei a kanghnak in zaam ding in timhtuahmi tahchuhnak pakhat.



Large grid area for drawing or writing.

Hmailei thawngthanh

Thawngpaang tam deuh theihnak caah, a tang i vuapsaih hi zoh:

Mei lei rianttuan piaknak pawl

Victoria Mei Runvennak (FRV)
frv.vic.gov.au

Rampumpi Mei lei Nawlgeihnak Country Fire Authority (CFA)
cfa.vic.gov.au

A dang vuapsaih pawl

Victoria Energy Safe Victoria (ESV) (Mei Himnak Victoria)
esv.vic.gov.au

Caalehnak le Holhlehnak lei Rianttuanpiaknak (TIS)
www.tisnational.gov.au/en/Non-English-speakers/Help-using-TIS-National-services/Immediate-telephone-interpreting-for-non-English-speakers

VicEmergency
(Victoria i lakhruak thilcang zuahnawhnak)
emergency.vic.gov.au

Australia Phozarnak
expression.com.au

Department of Families, Fainess and
Housing (DFFH) (Chungkhar khuasak
tintuk nak lei bu
dffh.vic.gov.au

Kidsafe Victoria (Ngakchia himnak Victoria)
kidsafevic.com.au

Emergency Management Victoria (EMV)
(Lakhruak thilcang Tawlrelnak Victoria (EMV)
emv.vic.gov.au

Victoria Caansau dirkhawhnak
sustainability.vic.gov.au

Victoria Innsakmi lei Nawlgeihnak
vba.vic.gov.au

