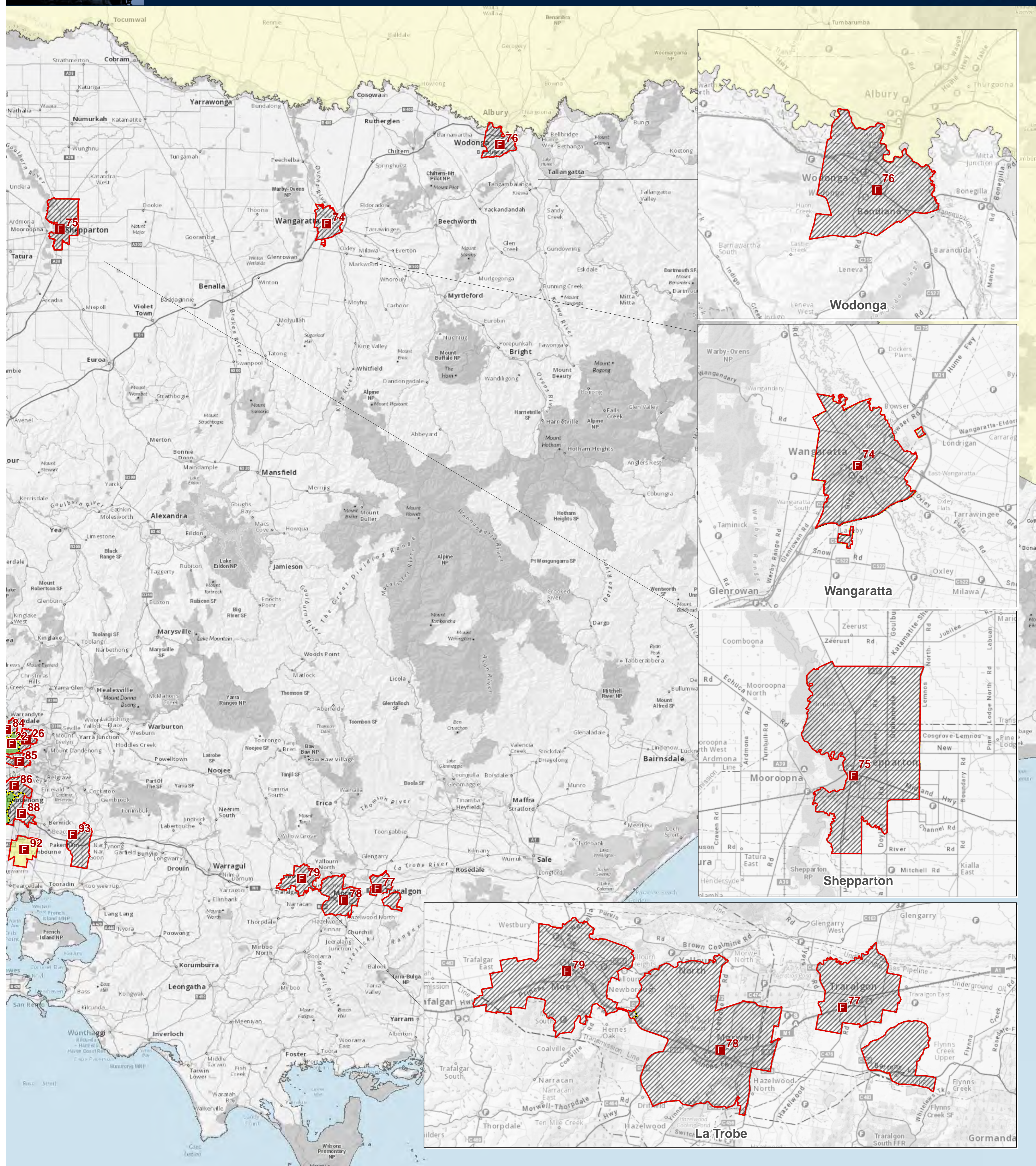


Response time data for Fire Rescue Victoria (FRV) appliances responding to Structure Fires in the FRV Fire District where the FRV appliances are primary appliances (1st appliance onscene), from 1 October 2020 to 31 December 2020.



This measure applies a benchmark of 7.7 minutes for all SF.

Calls under Normal Road Conditions and outside the FRV Fire District have been excluded.

Within Target Percentage

	FRV Fire Stations		FRV Boundary		Maintenance Area		Station MA with < 10 emergency incidents.
			70 - 80 %				90 - 100 %
			80 - 90 %				



(c) State Government of Victoria 2021
 This map is a snapshot generated from Victorian Government data as well as data from various other sources. This does not guarantee that the publication is without flaw of any kind or is wholly appropriate for your particular purposes and therefore disclaims all liability for error, loss or damage which may arise from reliance upon it. All persons accessing this information should make appropriate enquiries to assess the currency of the data.

Copyright Notice:
 Published edition, original works and this compilation
 (c) Spatial Vision Innovations Pty Ltd, Australia 2021
 FRV Business Intelligence & GIS
 Map produced: 29 June 2021
 Request ID: A00005929