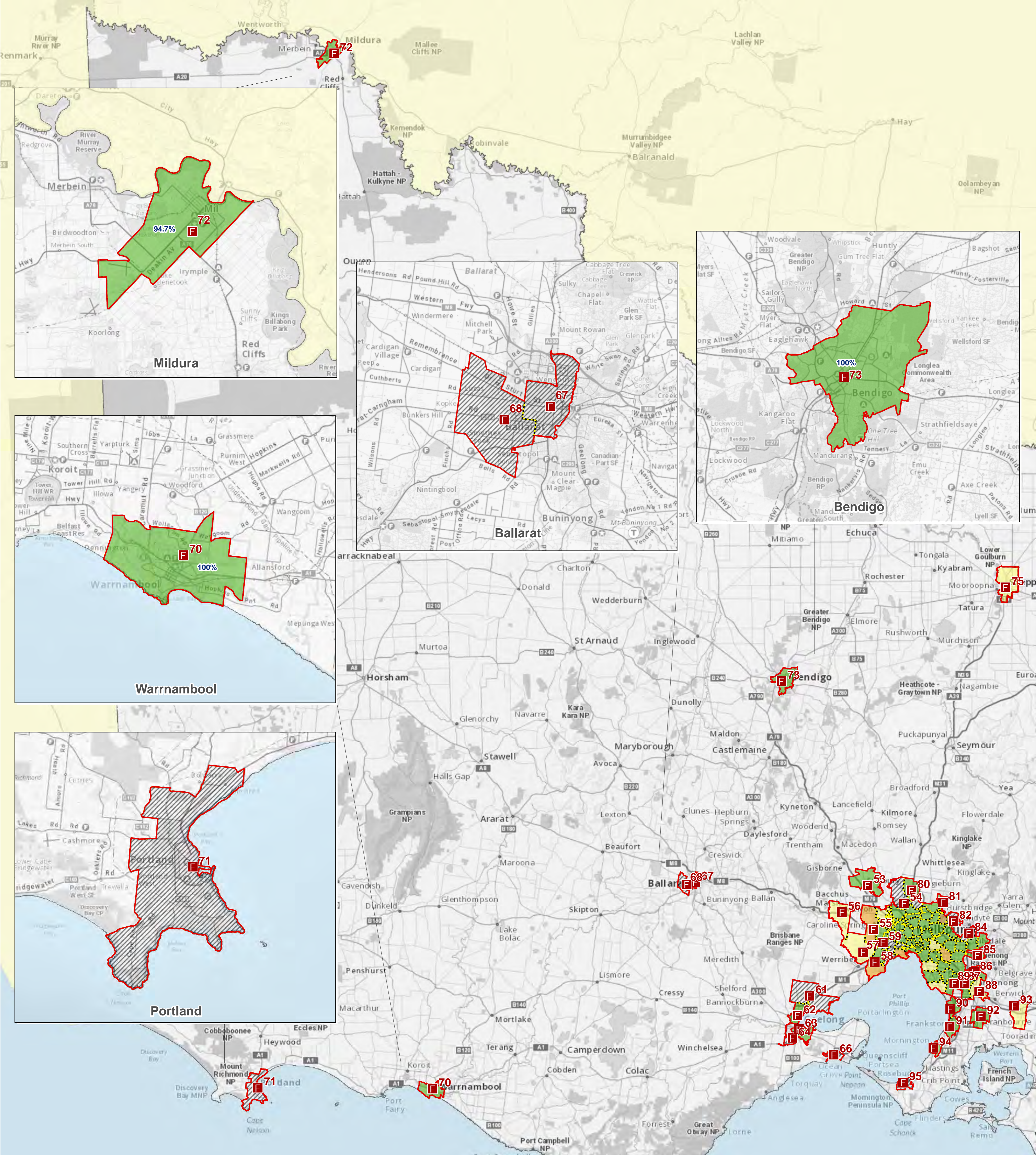


Response time data for Fire Rescue Victoria (FRV) appliances responding to Emergency Medical Response incidents in the FRV Fire District where the FRV appliances are primary appliances (1st appliance onscene), from 1 January 2021 to 31 March 2021.



This measure applies a benchmark of 9.2 minutes for all EMR.

Calls under Normal Road Conditions and outside the FRV Fire District have been excluded.

**F** FRV Fire Stations

**FRV Boundary**

**Maintenance Area**

**Station MA with < 10 emergency incidents.**

**Within Target Percentage**

	60 - 70 %		80 - 90 %
	70 - 80 %		90 - 100 %



(c) State Government of Victoria 2021  
 This map is a snapshot generated from Victorian Government data as well as data from various other sources. This does not guarantee that the publication is without flaw of any kind or is wholly appropriate for your particular purposes and therefore disclaims all liability for error, loss or damage which may arise from reliance upon it. All persons accessing this information should make appropriate enquiries to assess the currency of the data.

Copyright Notice:  
 Published edition, original works and this compilation  
 (c) Spatial Vision Innovations Pty Ltd, Australia 2021  
 FRV Business Intelligence & GIS  
 Map produced: 13 August 2021  
 Request ID: A00005958