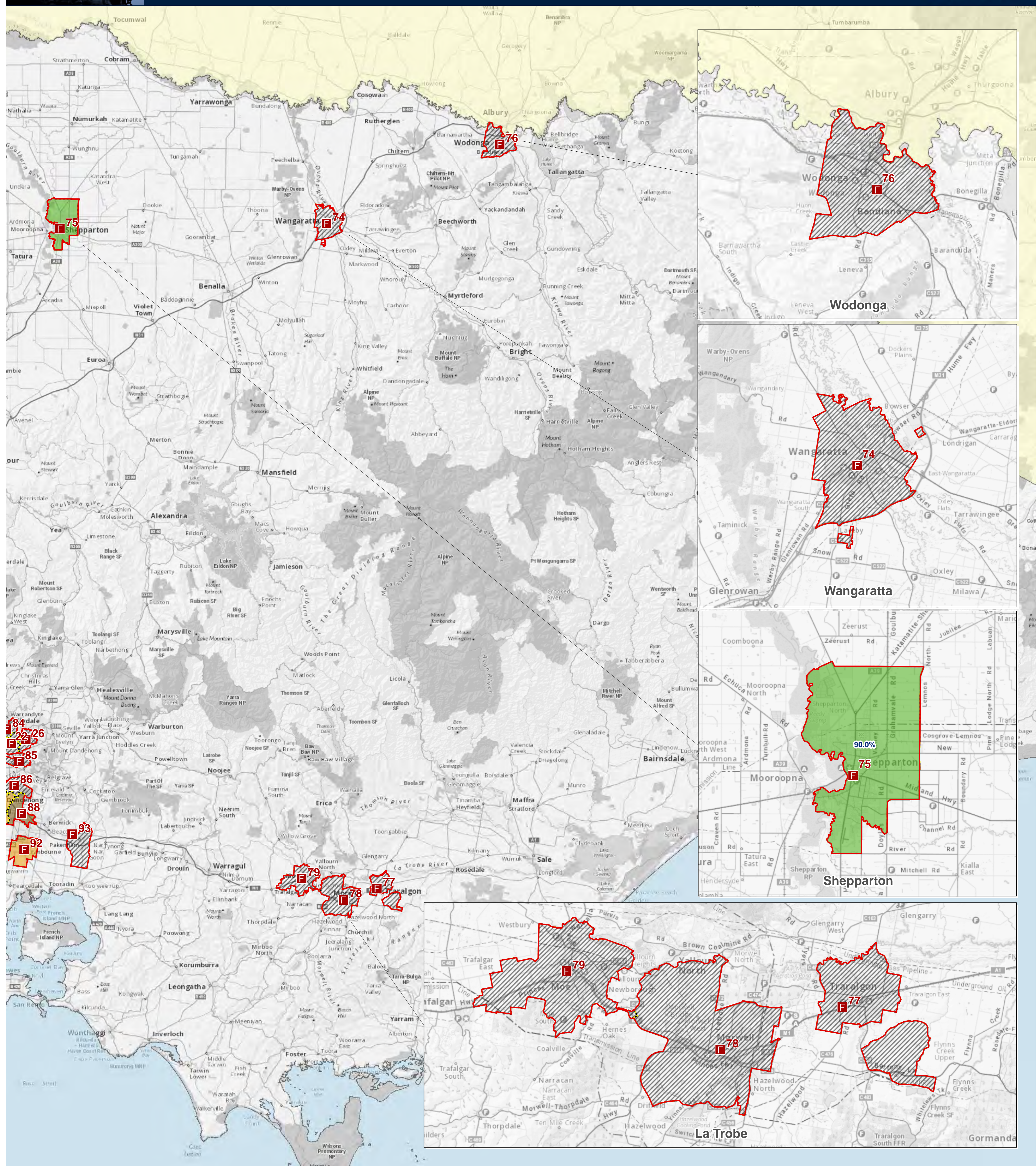


Response time data for Fire Rescue Victoria (FRV) appliances responding to Structure Fires in the FRV Fire District where the FRV appliances are primary appliances (1st appliance onscene), from 1 April 2021 to 30 June 2021.



This measure applies a benchmark of 7.7 minutes for all SF.

Calls under Normal Road Conditions and outside the FRV Fire District have been excluded.

FRV Fire Stations	Within Target	
FRV Boundary	Percentage	70 - 80 %
Maintenance Area	80 - 90 %	
Station MA with < 10 emergency incidents.	90 - 100 %	
	50 - 60 %	
	60 - 70 %	



(c) State Government of Victoria 2021
 This map is a snapshot generated from Victorian Government data as well as data from various other sources. This does not guarantee that the publication is without flaw of any kind or is wholly appropriate for your particular purposes and therefore disclaims all liability for error, loss or damage which may arise from reliance upon it. All persons accessing this information should make appropriate enquiries to assess the currency of the data.

Copyright Notice:
 Published edition, original works and this compilation
 (c) Spatial Vision Innovations Pty Ltd, Australia 2021
 FRV Business Intelligence & GIS
 Map produced: 23 September 2021
 Request ID: A00005975