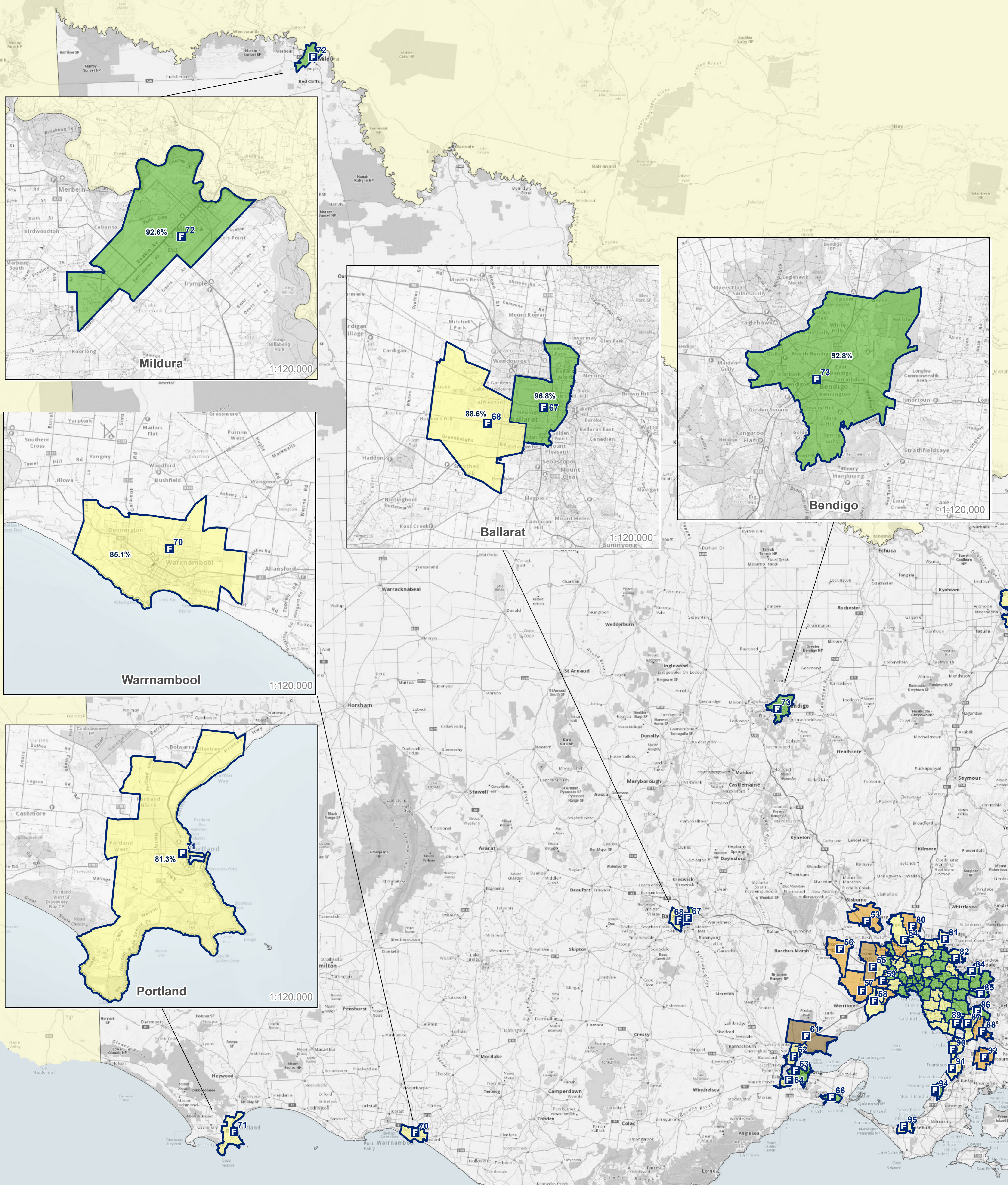


Response time data for Fire Rescue Victoria (FRV) appliances responding to emergency incidents (Code 1) in the FRV Fire District where the FRV appliances are primary appliances (1st appliance onscene), from 1 April 2022 to 30 June 2022.

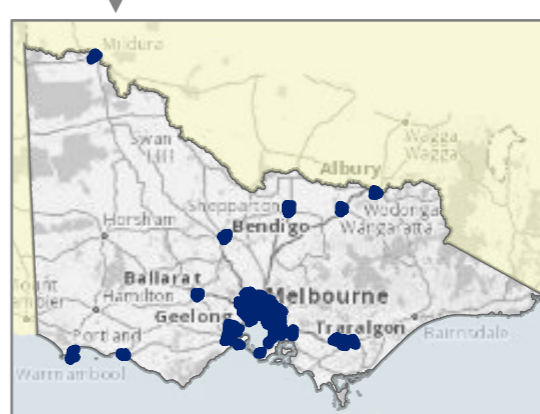


This measure applies a benchmark of 7.7 minutes for all Code 1 incidents, with the exception of emergency medical response incidents (EMR). The service delivery standard (response time) for EMR is 9.2 minutes. Calls under Normal Road Conditions and outside the FRV Fire District have been excluded.

FRV Fire Stations	Within Target Percentage		
FRV Boundary	50 - 60 %	70 - 80 %	90 - 100 %
Maintenance Area	60 - 70 %	80 - 90 %	

Scale 1:500,000

FRV Business Intelligence & GIS
Map produced: 30 August 2022
Request ID: 220829_1200



(c) State Government of Victoria 2022
This map is a snapshot generated from Victorian Government data as well as data from various other sources. This does not guarantee that the publication is without flaw of any kind or is wholly appropriate for your particular purposes and therefore disclaims all liability for error, loss or damage which may arise from reliance upon it. All persons accessing this information should make appropriate enquiries to assess the currency of the data.

Copyright Notice:
Published edition, original works and this compilation
(c) Spatial Vision Innovations Pty Ltd, Australia 2022