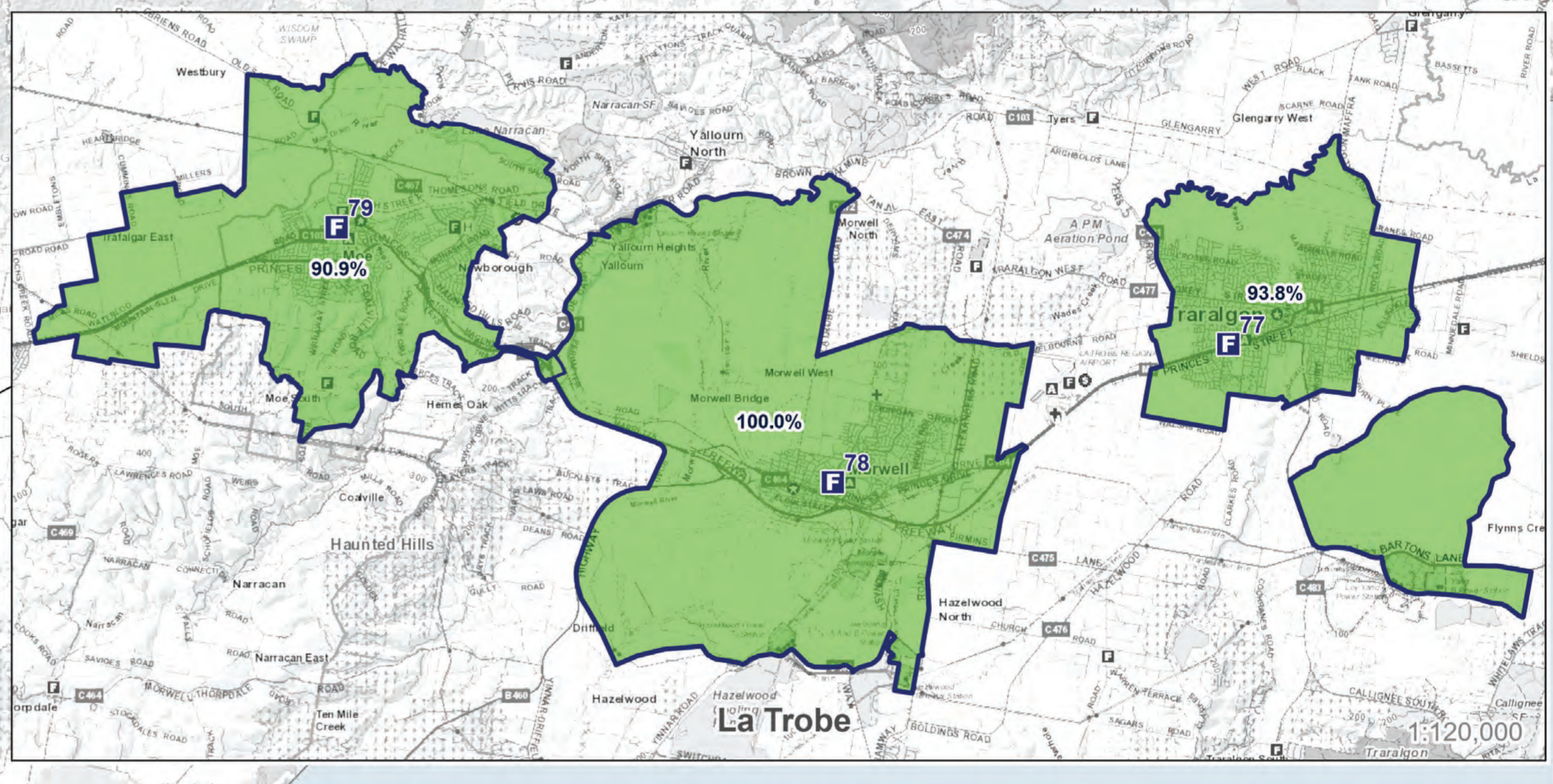
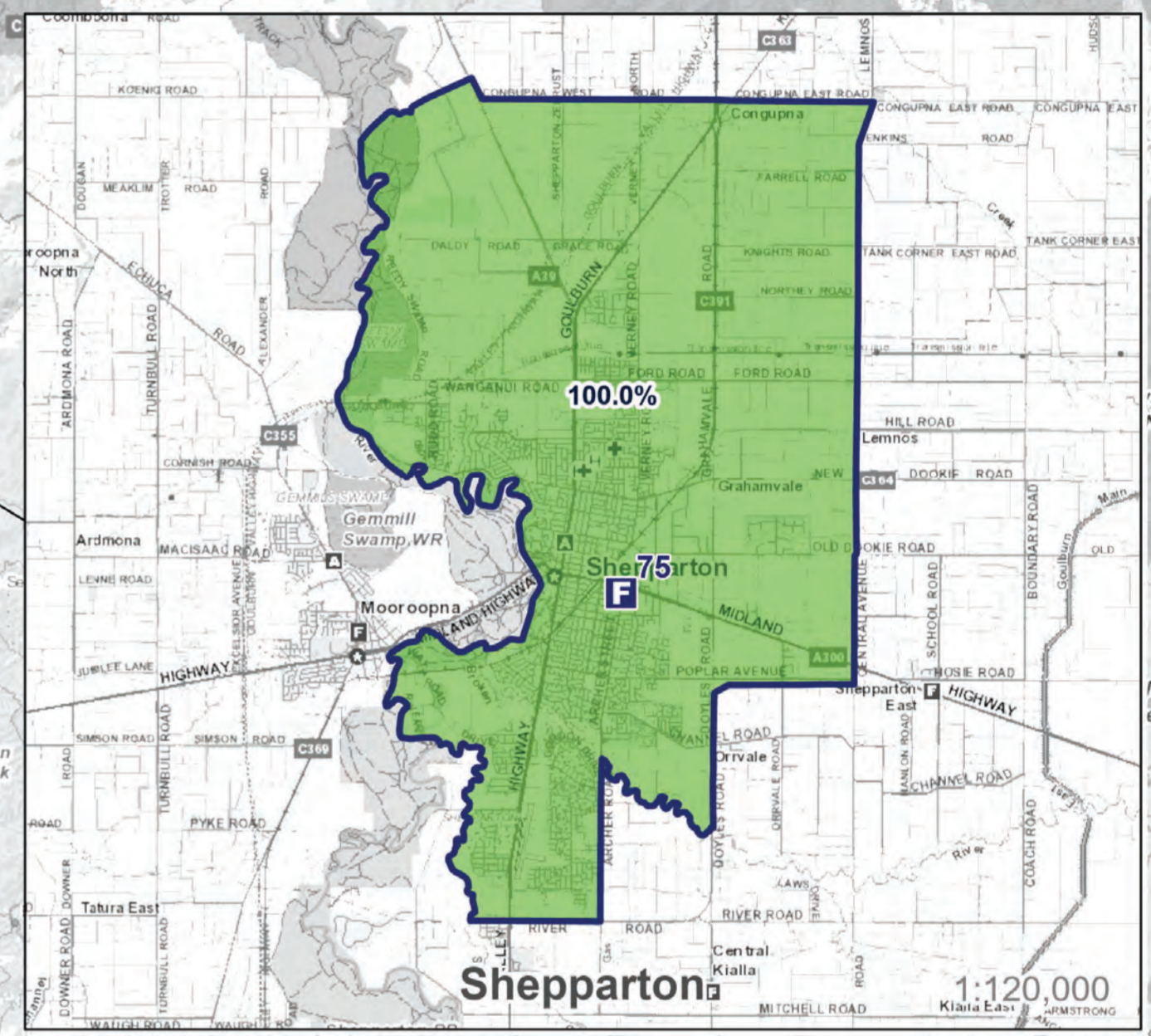
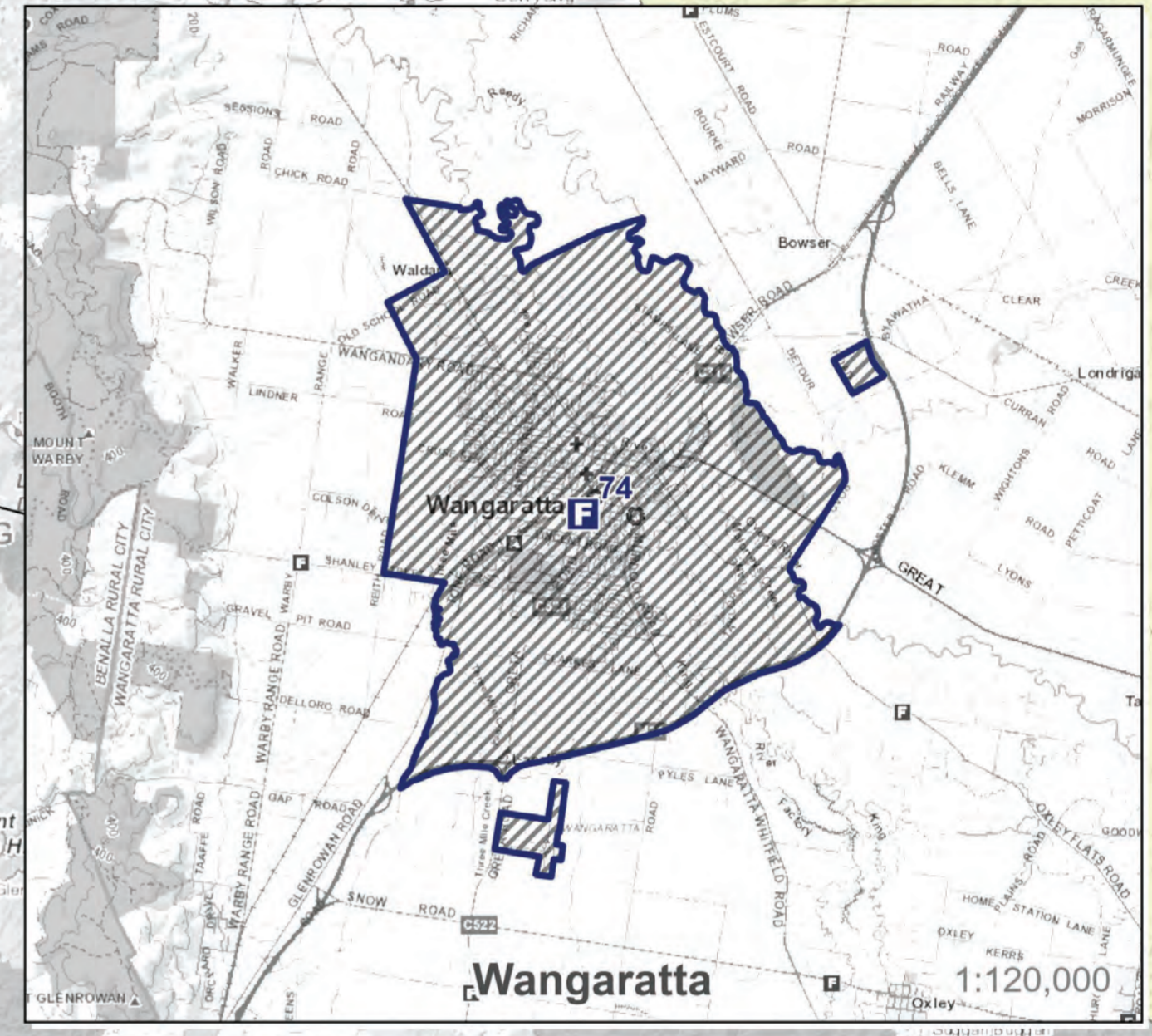
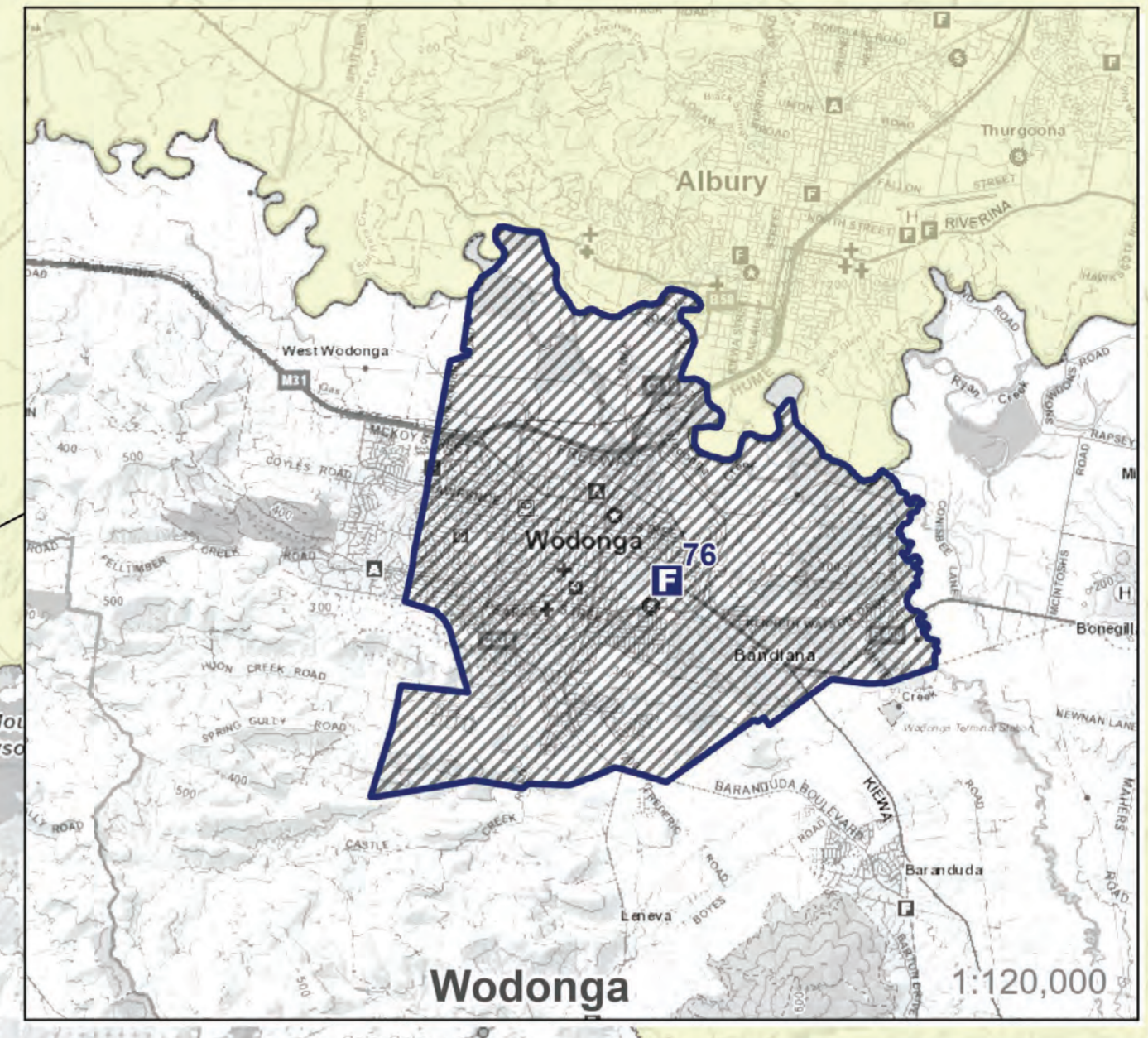
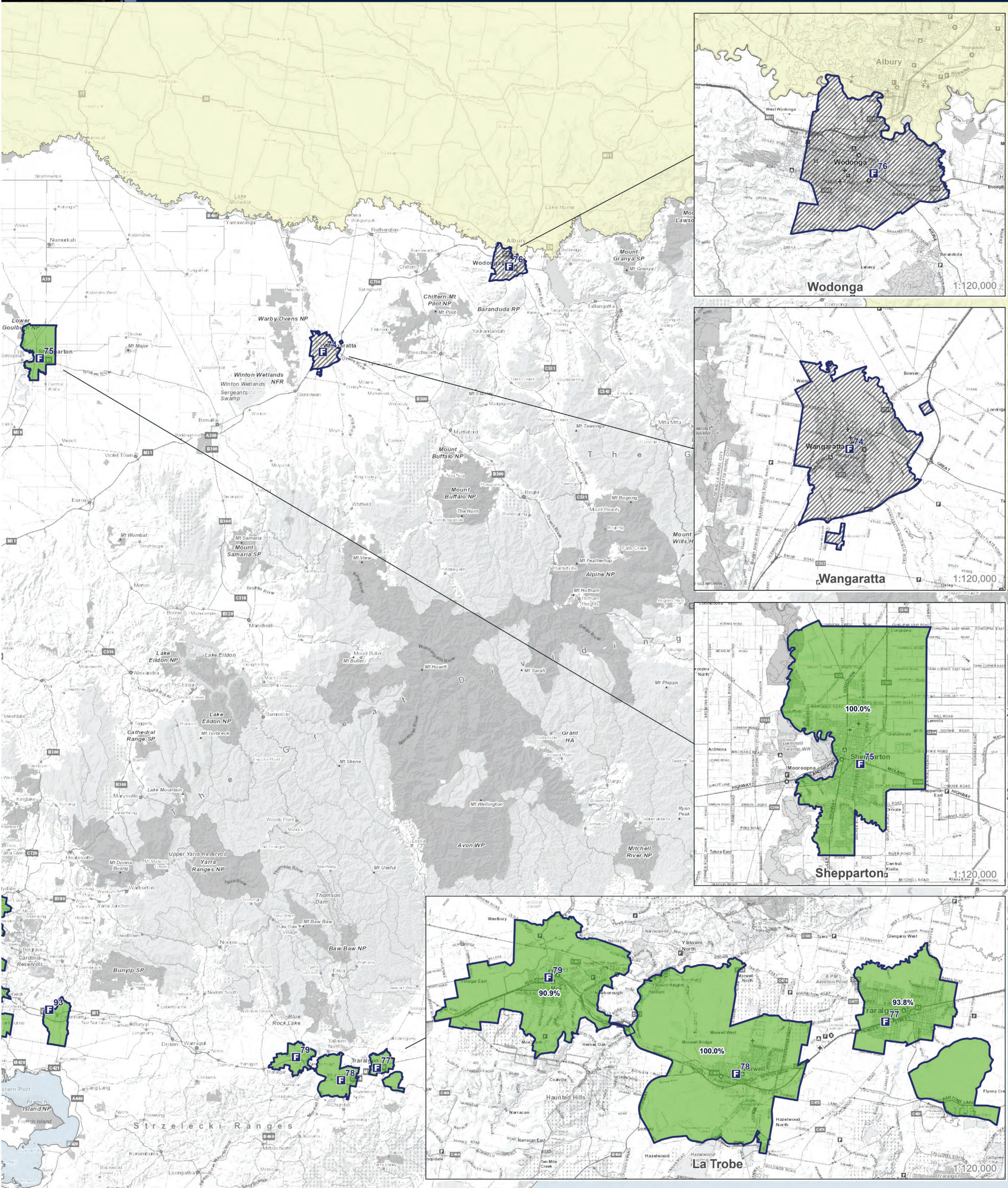


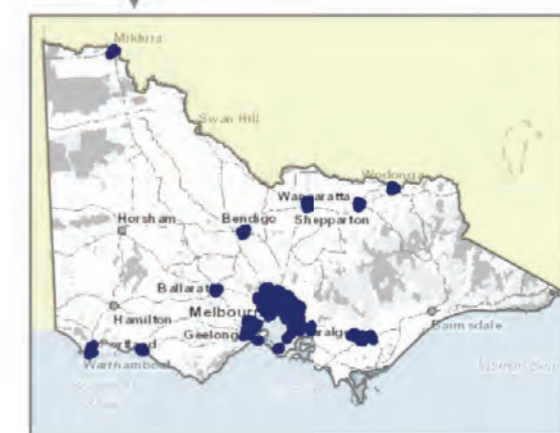
Response time data for Fire Rescue Victoria (FRV) appliances responding to Emergency Medical Response incidents in the FRV Fire District where the FRV appliances are primary appliances (1st appliance onscene), from 1 July 2022 to 30 September 2022.



This measure applies a benchmark of 9.2 minutes for all EMR. Calls under Normal Road Conditions and outside the FRV Fire District have been excluded.

FRV Fire Stations	Within Target Percentage
FRV Fire Stations	
FRV Boundary	70-80%
Maintenance Area	80-90%
Station MA with < 10 emergency incidents.	90-100%

Scale 1:500,000



FRV Business Intelligence & GIS
Map produced: 11 September 2023
Request ID: Public Reporting/FY23/Maps/Q1

(c) State Government of Victoria 2023
This map is a snapshot generated from Victorian Government data as well as data from various other sources. This does not guarantee that the publication is without flaw of any kind or is wholly appropriate for your particular purposes and therefore disclaims all liability for error, loss or damage which may arise from reliance upon it. All persons accessing this information should make appropriate enquiries to assess the currency of the data.

Disclaimer:

Alternative data set - An alternative data set was used to generate this report, as access to FRV data was limited following the cyber-attack of 15 December 2022. Post incident data containing correct incident type classifications (i.e. structure fire) was unavailable.

To validate the accuracy of the result, the previous and alternative data sets were compared for Q1 FY 2022/23. This showed a 0.6 percentage point difference for Emergency Medical Response (EMR) incidents, with the result showing as 95.0 per cent using alternative data compared to 95.6 per cent using previous data. This is deemed an acceptable margin of difference.