

Response time data for Fire Rescue Victoria (FRV) appliances responding to Structure Fires in the FRV Fire District where the FRV appliances are primary appliances (1st appliance onscene), from 1 October 2022 to 31 December 2022.

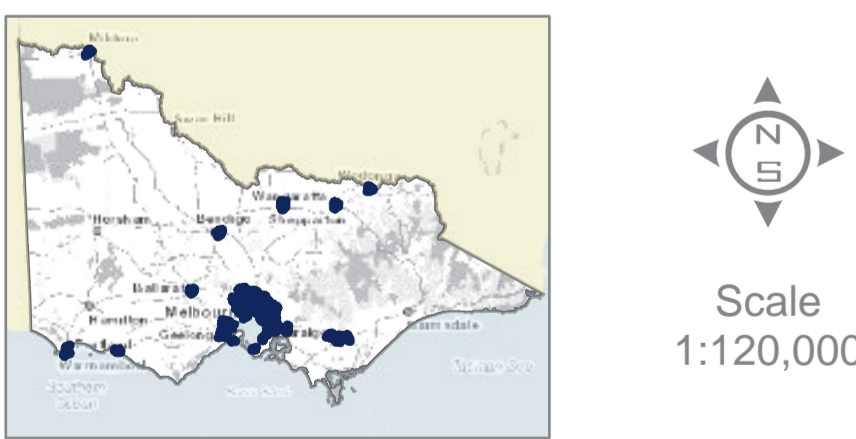
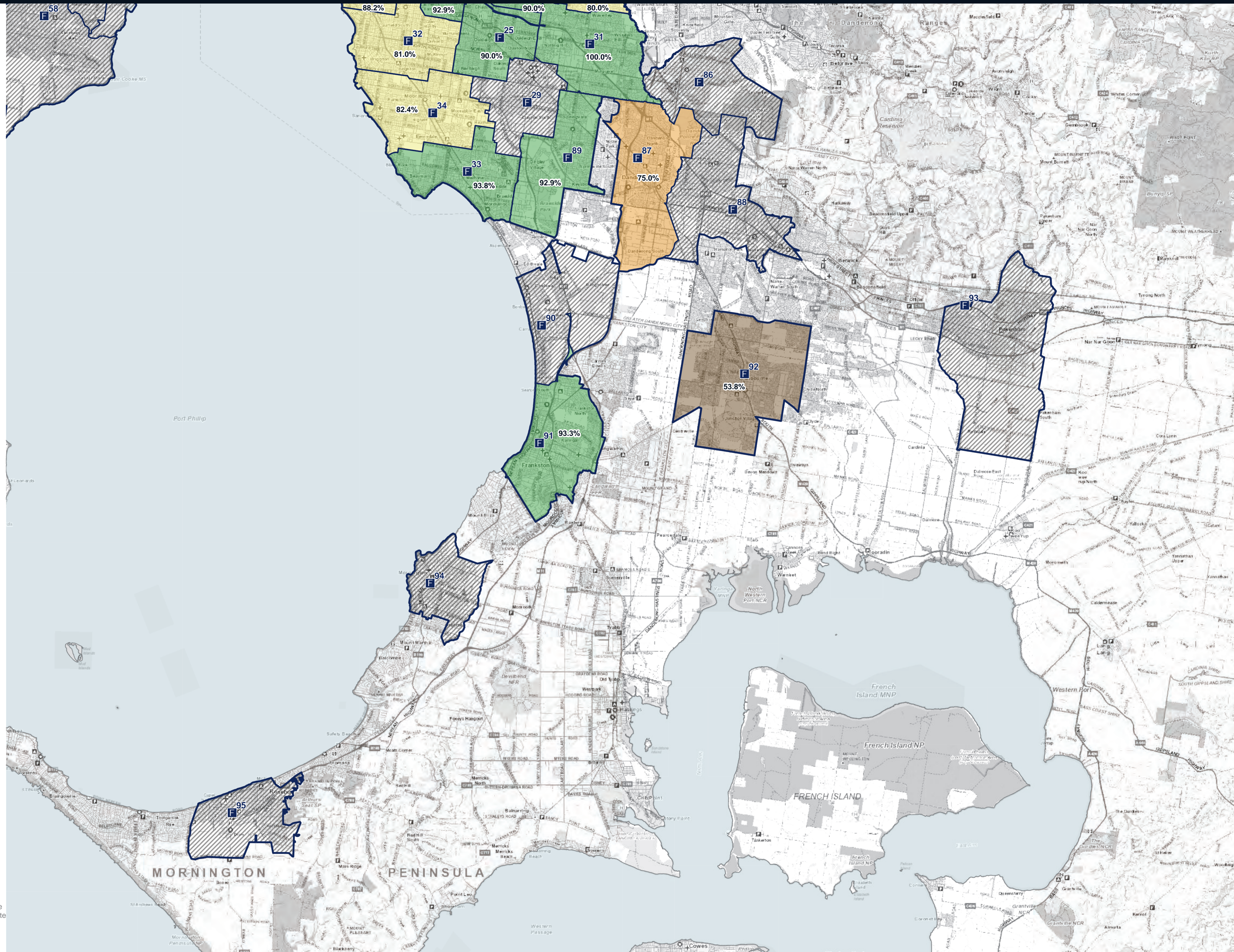


This measure applies a benchmark of 7.7 minutes for all SF.

Calls under Normal Road Conditions and outside the FRV Fire District have been excluded.

- FRV Fire Stations
- FRV Boundary
- Maintenance Area
- Station MA with < 10 emergency incidents.

- Within Target Percentage
- 50-60%
  - 60-70%
  - 70-80%
  - 80-90%
  - 90-100%



FRV Business Intelligence & GIS  
 Map produced: 14 September 2023  
 Request ID: Public Reporting/FY23/Maps/Q2

(c) State Government of Victoria 2023  
 This map is a snapshot generated from Victorian Government data as well as data from various other sources. This does not guarantee that the publication is without flaw of any kind or is wholly appropriate for your particular purposes and therefore disclaims all liability for error, loss or damage which may arise from reliance upon it. All persons accessing this information should make appropriate enquiries to assess the currency of the data.

**Disclaimer:**  
**Alternative data set** - An alternative data set was used to generate this report, as access to FRV data was limited following the cyber-attack of 15 December 2022. Post incident data containing correct incident type classifications (i.e. structure fire) was unavailable.  
 To validate the accuracy of the result, the previous and alternative data sets were compared for Q1 FY 2022/23. This showed a 0.7 percentage point difference for Structure Fires, with the result showing as 89.2 per cent using alternative data compared to 89.9 per cent using previous data. This is deemed an acceptable margin of difference.  
**Increase in response times** - Response time incorporates time taken to depart, or 'turn out' from the station and the travel time to the incident. There has been a slight increase in response time in FY 2022/23, likely attributable to the electronic and automated Station Turnout System (STO) being disabled (as a result of the cyber-attack) from December 2022, increasing time taken to turn out from the station.  
 In STO's absence, FRV crews and appliances were dispatched to emergencies through pagers, radios and mobile phones. The restoration of STO on 1 August 2023 is expected to improve response times in reporting periods following Q4 FY 2022/23.