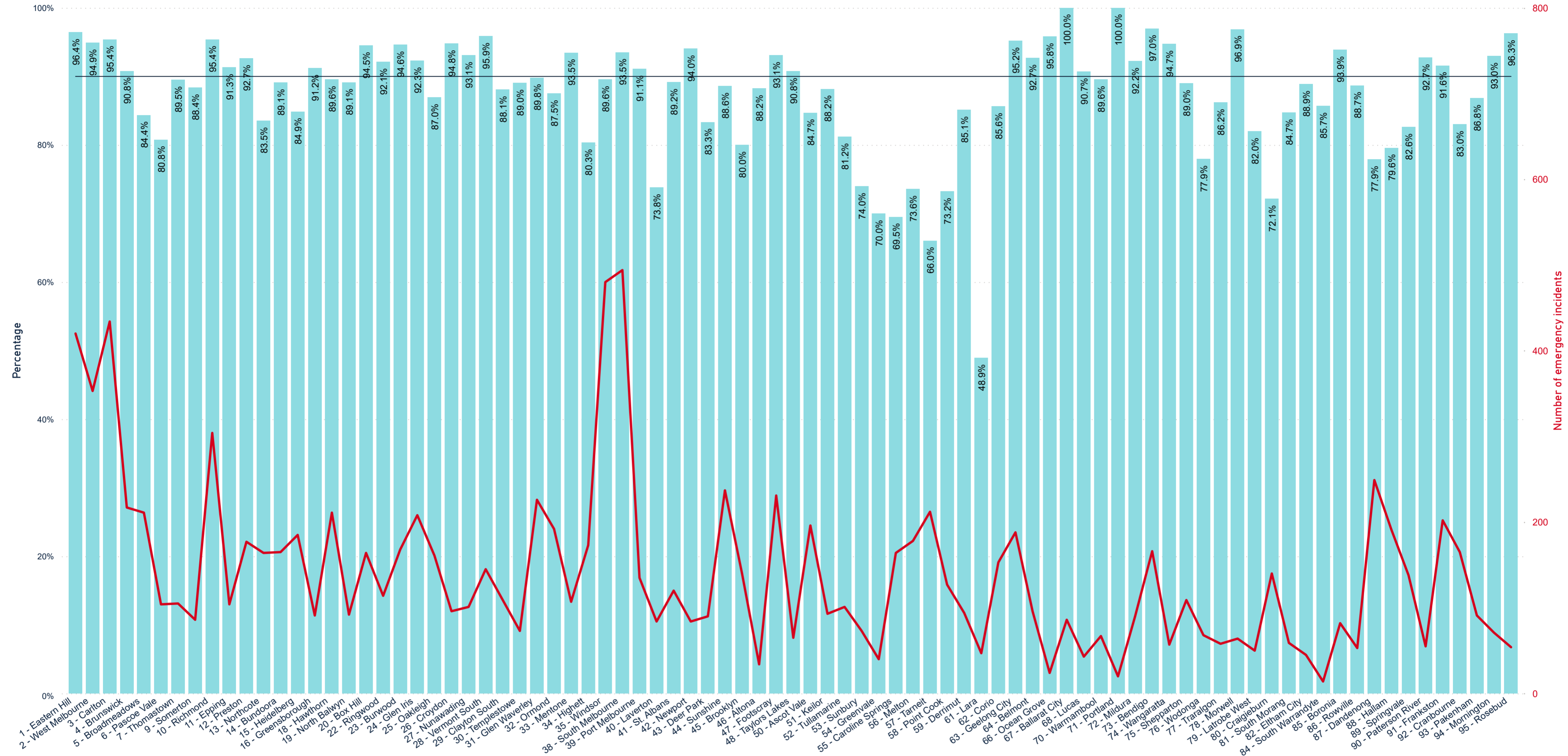




All Emergency Incidents (Code 1) - Response Times Meeting Benchmarks

Reporting Period: 1 June 2022 - 30 September 2022

● % within the target — Target - 90% — Total # of emergency incidents



Alternative data set - An alternative data set was used to generate this report, as access to FRV data was limited following the cyber-attack of 15 December 2022. Post incident data containing correct incident type classifications (i.e. structure fire) was unavailable.

To validate the accuracy of the result, the previous and alternative data sets were compared for Q1 FY 2022/23. This showed a 1.3 percentage point difference for "All Code 1" incidents, with the result showing as 88.2 per cent using alternative data compared to 89.5 per cent using previous data. This is deemed an acceptable margin of difference.