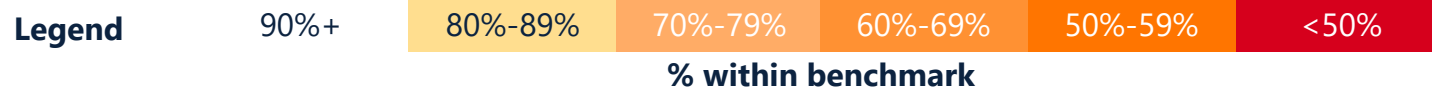




Reporting Period: 1 January 2024 - 31 March 2024

All emergency incidents (Code 1) meeting benchmark by Station Maintenance Area

FRV has service delivery standards, which specify a response time target for a station to attend an emergency incident. The service delivery standard (response time) for all emergency incidents is 7.7 minutes with the exception of Emergency Medical Response (EMR). The service delivery standard (response time) for EMR is 9.2 minutes.



FRV District + Station Maintenance Area	Number of incidents within the Station Maintenance Area for the reporting period	Number of emergency incidents within the Station Maintenance Area for the reporting period	Number of emergency incidents the standards were met by any station	% of emergency incidents the standards were met by any station	The time in minutes in which 90% of emergency incidents were responded to by any station
Central District	4374	3910	3567	91.2%	7.5
1 - Eastern Hill	528	482	461	95.6%	6.5
2 - West Melbourne	476	431	400	92.8%	7.0
3 - Carlton	527	479	450	93.9%	7.0
4 - Brunswick	305	263	241	91.6%	7.3
10 - Richmond	317	297	285	96.0%	6.8
13 - Northcote	221	185	155	83.8%	8.6
18 - Hawthorn	283	245	214	87.3%	8.2
35 - Windsor	678	594	532	89.6%	7.8
38 - South Melbourne	578	530	477	90.0%	7.7
39 - Port Melbourne	193	173	155	89.6%	7.7
50 - Ascot Vale	268	231	197	85.3%	8.1
Eastern District	1732	1429	1275	89.2%	7.9
19 - North Balwyn	168	135	117	86.7%	8.4
20 - Box Hill	223	194	182	93.8%	7.1
22 - Ringwood	196	166	148	89.2%	7.8
23 - Burwood	226	180	158	87.8%	8.4
26 - Croydon	149	122	114	93.4%	7.2
27 - Nunawading	178	146	130	89.0%	7.7
28 - Vermont South	228	192	172	89.6%	7.8
30 - Templestowe	96	83	67	80.7%	9.3
82 - Eltham City	88	66	54	81.8%	8.8
84 - South Warrandyte	18	11	10	90.9%	6.7
85 - Boronia	162	134	123	91.8%	7.1
North West Region	787	617	580	94.0%	7.2
67 - Ballarat City	158	132	131	99.2%	5.7
68 - Lucas	65	56	50	89.3%	7.8
70 - Warrnambool	137	102	94	92.2%	7.3
71 - Portland	48	36	34	94.4%	7.5
72 - Mildura	161	116	109	94.0%	6.9
73 - Bendigo	218	175	162	92.6%	7.4
Northern District	2252	1899	1623	85.5%	8.4
5 - Broadmeadows	349	285	232	81.4%	8.7
6 - Pascoe Vale	188	146	124	84.9%	8.3
7 - Thomastown	173	140	128	91.4%	7.8
9 - Somerton	159	140	120	85.7%	8.2
11 - Epping	153	120	99	82.5%	8.7
12 - Preston	248	217	197	90.8%	7.7
14 - Bundoora	275	250	226	90.4%	7.7
15 - Heidelberg	285	240	202	84.2%	8.6
16 - Greensborough	120	101	85	84.2%	8.2
80 - Craigieburn	197	173	136	78.6%	10.7
81 - South Morang	105	87	74	85.1%	9.0
South East Region	830	632	520	82.3%	9.7
74 - Wangaratta	109	92	80	87.0%	8.0
75 - Shepparton	217	167	154	92.2%	7.5
76 - Wodonga	153	105	85	81.0%	8.6
77 - Traralgon	147	117	89	76.1%	10.4
78 - Morwell	120	97	68	70.1%	11.0
79 - Latrobe West	84	54	44	81.5%	10.6
Southern District 1	2137	1753	1459	83.2%	9.0
24 - Glen Iris	214	187	165	88.2%	8.0
25 - Oakleigh	254	198	163	82.3%	9.7
29 - Clayton South	185	150	125	83.3%	9.6
31 - Glen Waverley	417	362	301	83.1%	9.1
32 - Ormond	292	241	200	83.0%	9.0
33 - Mentone	180	133	116	87.2%	8.3
34 - Highett	299	247	191	77.3%	9.4
86 - Rowville	89	79	72	91.1%	7.5
89 - Springvale	207	156	126	80.8%	9.0
Southern District 2	1725	1381	1095	79.3%	9.2
87 - Dandenong	382	323	248	76.8%	9.7
88 - Hallam	273	225	175	77.8%	9.0
90 - Patterson River	123	99	78	78.8%	8.6
91 - Frankston	325	259	219	84.6%	8.3
92 - Cranbourne	276	222	155	69.8%	10.8
93 - Pakenham	136	95	75	78.9%	9.4
94 - Mornington	108	85	78	91.8%	7.3
95 - Rosebud	102	73	67	91.8%	7.5
Western District 1	1458	1259	977	77.6%	9.5
40 - Laverton	99	90	62	68.9%	9.3
42 - Newport	109	95	90	94.7%	7.2
45 - Brooklyn	179	155	128	82.6%	8.7
46 - Altona	70	58	51	87.9%	7.8
47 - Footscray	320	276	243	88.0%	7.9
57 - Tarneit	360	292	209	71.6%	11.1
58 - Point Cook	160	146	91	62.3%	10.9
59 - Derrimut	161	147	103	70.1%	9.7
Western District 2	1644	1377	1074	78.0%	9.4
41 - St. Albans	174	146	131	89.7%	8.0
43 - Deer Park	164	136	120	88.2%	8.1
44 - Sunshine	295	237	218	92.0%	7.6
48 - Taylors Lakes	100	87	76	87.4%	8.8
51 - Keilor	150	125	100	80.0%	9.0
52 - Tullamarine	136	125	81	64.8%	10.0
53 - Sunbury	115	90	70	77.8%	10.5
54 - Greenvale	49	44	31	70.5%	11.1
55 - Caroline Springs	232	206	131	63.6%	10.0
56 - Melton	229	181	116	64.1%	11.1
Western District 3	725	611	497	81.3%	9.3
61 - Lara	70	59	27	45.8%	12.2
62 - Corio	238	207	166	80.2%	8.7
63 - Geelong City	252	210	185	88.1%	8.1
64 - Belmont	133	110	96	87.3%	8.1
66 - Ocean Grove	32	25	23	92.0%	6.8
Total	17664	14868	12667	85.2%	8.6

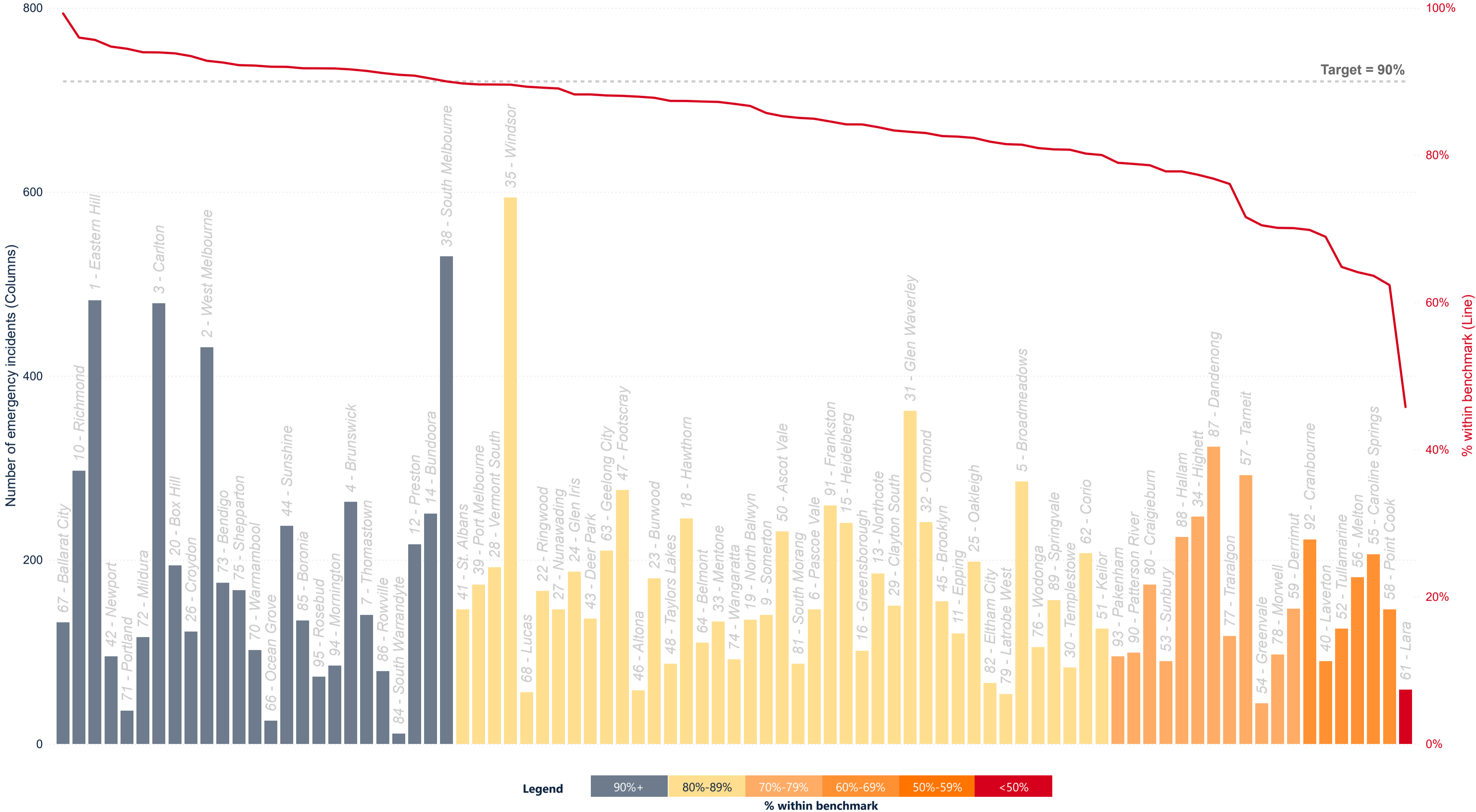


Response time data for Fire Rescue Victoria (FRV) appliances responding to emergency incidents (Code 1) in the FRV Fire District where the FRV appliances are primary appliances (1st appliance onscene)

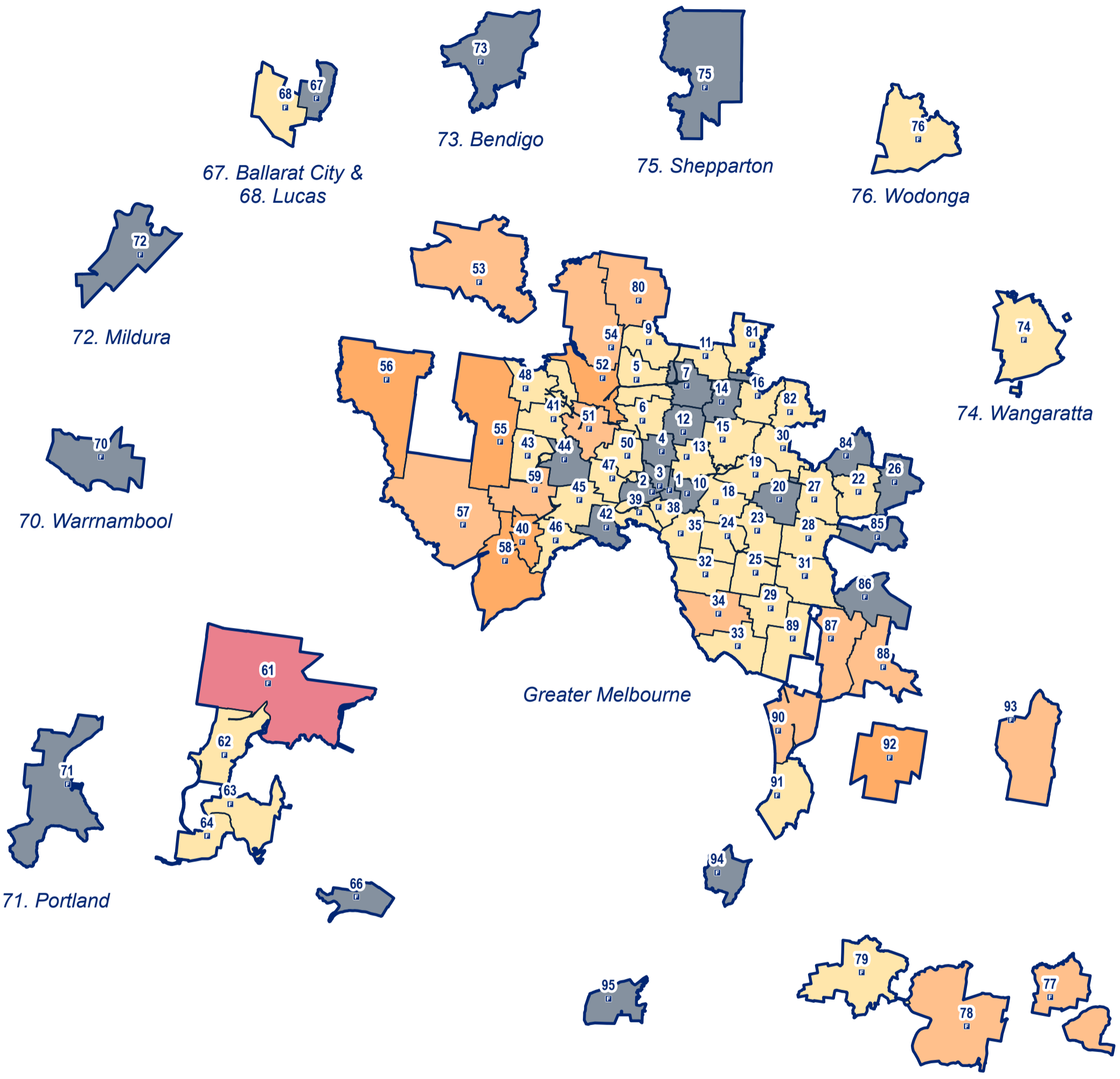


Reporting Period: 1 January 2024 - 31 March 2024

All Emergency Incidents (Code 1) - Response Times Meeting Benchmarks



Response time data for Fire Rescue Victoria (FRV) appliances responding to emergency incidents (Code 1) in the FRV Fire District where the FRV appliances are primary appliances (1st appliance onscene), from 1 January 2024 to 31 March 2024.



- FRV Fire Station
- FRV Boundary
- Maintenance Area
- SMA with < 10 emergency incidents
- Within Target Percentage
 - <50%
 - 50 - 60%
 - 60 - 70%
 - 70 - 80%
 - 80 - 90%
 - 90 - 100%

FRV Business Intelligence & GIS
 Map produced: June 2024
 Request ID: Public Reporting/FY24/Q3/Maps

(c) State Government of Victoria 2024
 This map is a snapshot generated from Victorian Government data as well as data from various other sources. This does not guarantee that the publication is without flaw of any kind or is wholly appropriate for your particular purposes and therefore disclaims all liability for error, loss or damage which may arise from reliance upon it. All persons accessing this information should make appropriate enquiries to assess the currency of the data.

