



Response time data for Fire Rescue Victoria (FRV) appliances responding to Emergency Medical Response incidents in the FRV Fire District where the FRV appliances are primary appliances (1st appliance onscene)



Reporting Period: 1 October 2024 - 31 December 2024

Emergency Medical Response incidents (EMR) meeting benchmark by Station Maintenance Area

FRV has service delivery standards, which specify a response time target for a station to attend an emergency incident. The service delivery standard (response time) for EMR is 9.2 minutes.

Legend

90%+



% within benchmark

FRV District + Station Maintenance Area	Number of incidents within the Station Maintenance Area for the reporting period	Number of emergency incidents within the Station Maintenance Area for the reporting period	Number of emergency incidents the standards were met by any station	% of emergency incidents the standards were met by any station	The time in minutes in which 90% of emergency incidents were responded to by any station
Central District	246	242	236	97.5%	7.5
1 - Eastern Hill	23	23	23	100.0%	5.8
2 - West Melbourne	28	28	27	96.4%	8.2
3 - Carlton	16	16	16	100.0%	7.9
4 - Brunswick	14	14	14	100.0%	6.9
10 - Richmond	21	21	20	95.2%	8.0
13 - Northcote	24	24	24	100.0%	7.0
18 - Hawthorn	12	11	11	100.0%	8.0
35 - Windsor	54	51	47	92.2%	7.6
38 - South Melbourne	25	25	25	100.0%	6.5
39 - Port Melbourne	14	14	14	100.0%	6.5
50 - Ascot Vale	15	15	15	100.0%	7.5
Eastern District	135	135	129	95.6%	7.9
19 - North Balwyn	16	16	16	100.0%	8.3
20 - Box Hill	17	17	16	94.1%	7.8
22 - Ringwood	19	19	19	100.0%	7.3
23 - Burwood	12	12	12	100.0%	7.1
26 - Croydon	22	22	19	86.4%	9.7
27 - Nunawading	19	19	17	89.5%	10.1
28 - Vermont South	17	17	17	100.0%	6.8
85 - Boronia	13	13	13	100.0%	6.9
North West Region	59	58	57	98.3%	7.1
67 - Ballarat City	11	10	10	100.0%	5.9
70 - Warrnambool	21	21	21	100.0%	6.7
73 - Bendigo	27	27	26	96.3%	7.7
Northern District	221	221	207	93.7%	8.3
5 - Broadmeadows	32	32	29	90.6%	8.8
6 - Pascoe Vale	34	34	33	97.1%	8.1
7 - Thomastown	19	19	19	100.0%	7.7
9 - Somerton	10	10	10	100.0%	6.8
11 - Epping	23	23	22	95.7%	7.1
12 - Preston	17	17	17	100.0%	7.4
14 - Bundoora	10	10	10	100.0%	6.4
15 - Heidelberg	22	22	18	81.8%	10.0
16 - Greensborough	14	14	13	92.9%	8.4
80 - Craigieburn	23	23	19	82.6%	11.5
81 - South Morang	17	17	17	100.0%	7.6
South East Region	66	66	64	97.0%	6.6
74 - Wangaratta	10	10	9	90.0%	7.2
75 - Shepparton	19	19	18	94.7%	7.1
77 - Traralgon	12	12	12	100.0%	6.0
78 - Morwell	11	11	11	100.0%	6.6
79 - Latrobe West	14	14	14	100.0%	5.1
Southern District 1	148	148	138	93.2%	8.2
24 - Glen Iris	20	20	18	90.0%	7.2
25 - Oakleigh	10	10	9	90.0%	8.2
29 - Clayton South	12	12	12	100.0%	7.5
31 - Glen Waverley	22	22	18	81.8%	9.9
32 - Ormond	27	27	26	96.3%	8.3
33 - Mentone	18	18	18	100.0%	6.9
34 - Highett	20	20	18	90.0%	9.3
89 - Springvale	19	19	19	100.0%	7.4
Southern District 2	177	177	169	95.5%	8.3
87 - Dandenong	35	35	35	100.0%	6.5
88 - Hallam	29	29	27	93.1%	8.4
90 - Patterson River	15	15	14	93.3%	7.5
91 - Frankston	30	30	29	96.7%	8.5
92 - Cranbourne	24	24	23	95.8%	9.0
93 - Pakenham	11	11	9	81.8%	10.0
94 - Mornington	18	18	17	94.4%	7.2
95 - Rosebud	15	15	15	100.0%	6.2
Western District 1	97	97	91	93.8%	8.4
42 - Newport	10	10	10	100.0%	7.0
45 - Brooklyn	13	13	12	92.3%	8.7
47 - Footscray	24	24	23	95.8%	7.7
57 - Tarneit	35	35	33	94.3%	8.3
58 - Point Cook	15	15	13	86.7%	9.6
Western District 2	174	172	157	91.3%	9.2
41 - St. Albans	25	25	25	100.0%	8.5
43 - Deer Park	18	18	16	88.9%	8.4
44 - Sunshine	24	24	24	100.0%	6.7
48 - Taylors Lakes	10	10	10	100.0%	6.8
51 - Keilor	17	17	17	100.0%	7.5
52 - Tullamarine	15	15	14	93.3%	7.8
53 - Sunbury	17	17	14	82.4%	10.8
55 - Caroline Springs	16	14	10	71.4%	10.1
56 - Melton	32	32	27	84.4%	12.7
Western District 3	39	37	37	100.0%	7.3
62 - Corio	25	23	23	100.0%	7.5
63 - Geelong City	14	14	14	100.0%	5.8
Total	1362	1353	1285	95.0%	8.2

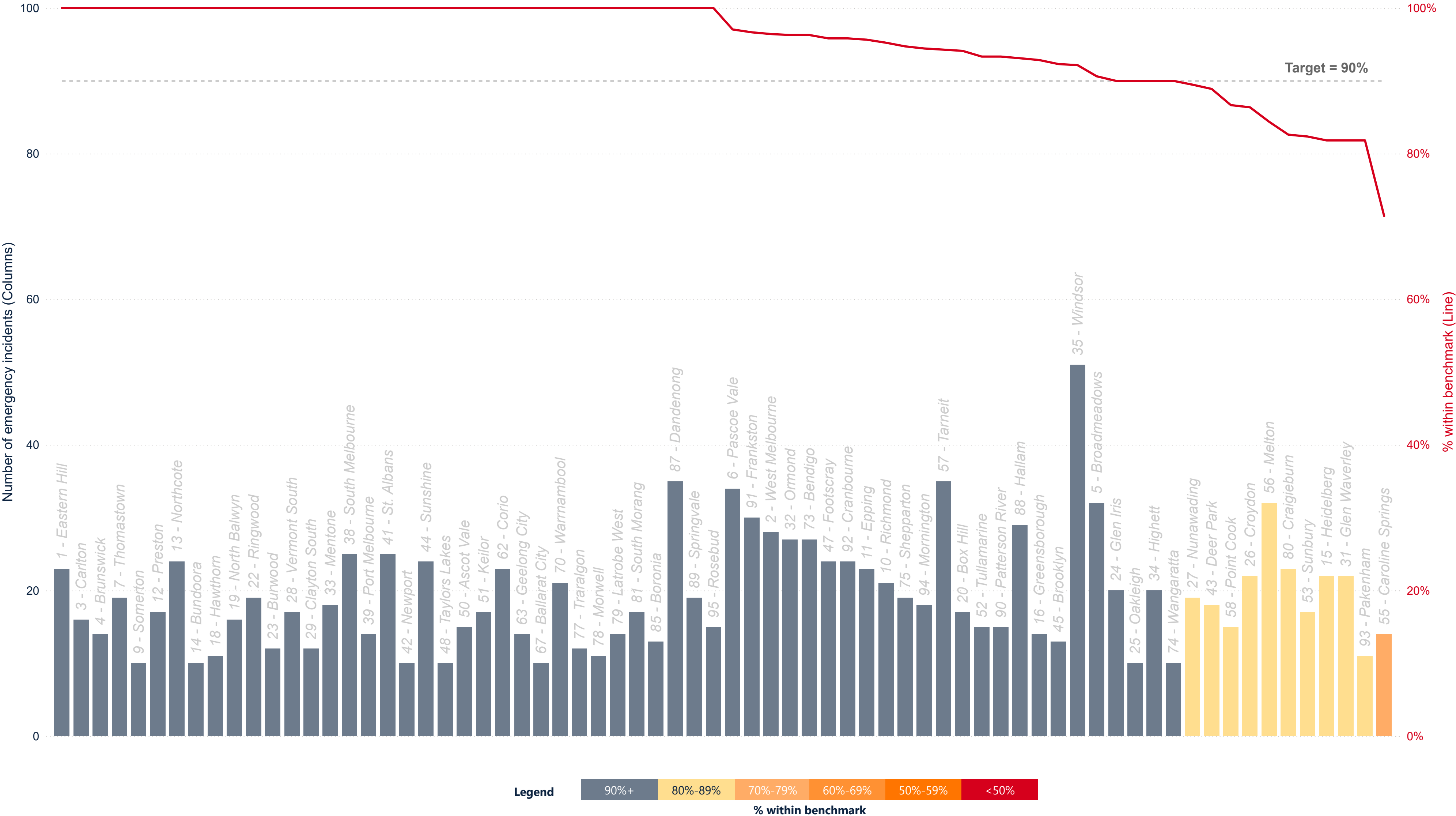


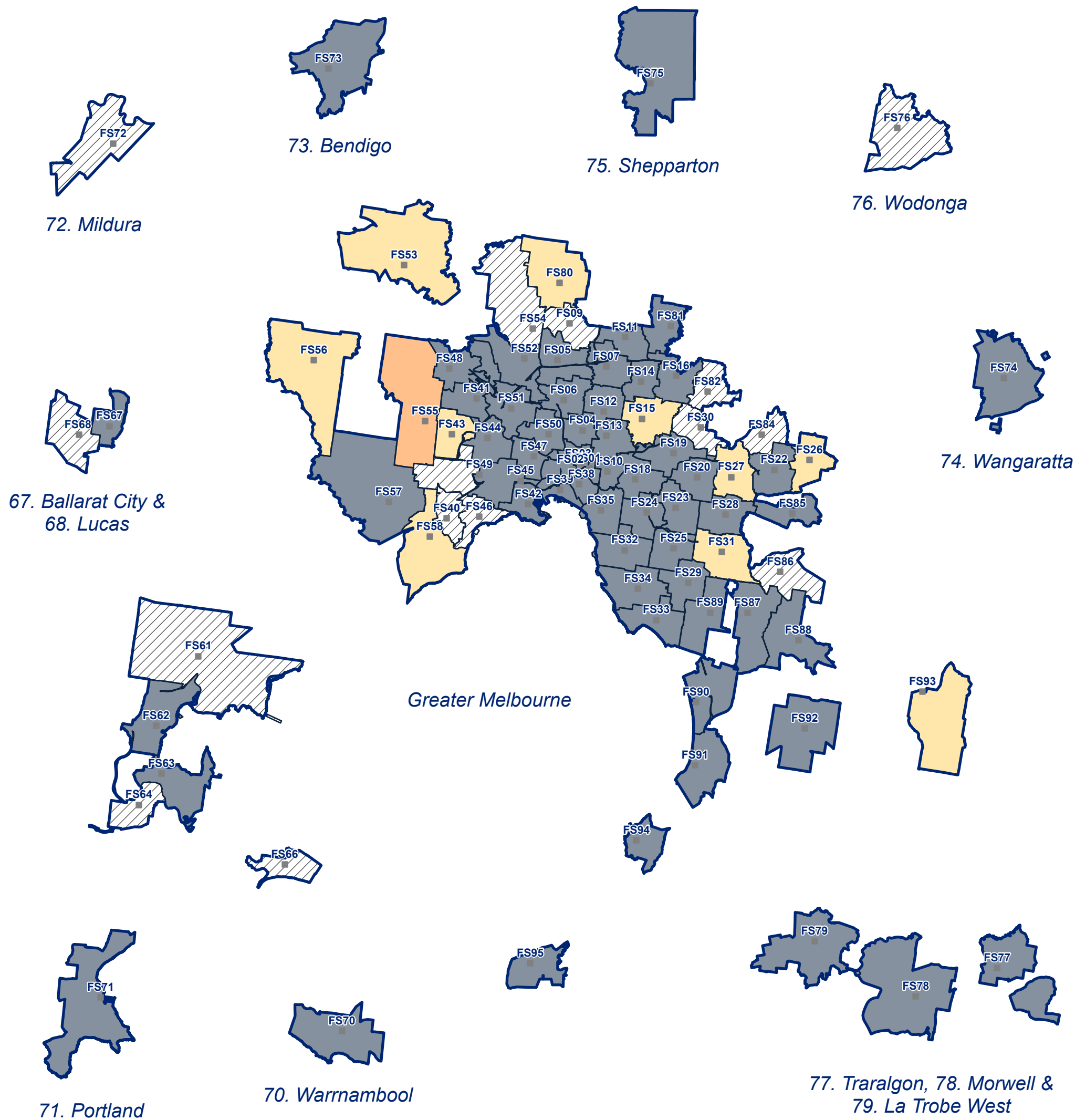
Response time data for Fire Rescue Victoria (FRV) appliances responding to Emergency Medical Response incidents in the FRV Fire District where the FRV appliances are primary appliances (1st appliance onscene)



Emergency Medical Response Incidents - Response Times Meeting Benchmarks

Reporting Period: 1 October 2024 - 31 December 2024





- FRV Fire Station
- FRV Boundary
- Maintenance Area (MA)
- MA with < 10 EMR incidents
- Within Target Percentage
 - Below 50%
 - 50 - 60%
 - 60 - 70%
 - 70 - 80%
 - 80 - 90%
 - 90 - 100%

FRV Business Intelligence & GIS
Map produced: February 2025
Request ID: Public Reporting/FY25/Q2/Maps

(c) State Government of Victoria 2025
This map is a snapshot generated from Victorian Government data as well as data from various other sources. This does not guarantee that the publication is without flaw of any kind or is wholly appropriate for your particular purposes and therefore disclaims all liability for error, loss or damage which may arise from reliance upon it. All persons accessing this information should make appropriate enquiries to assess the currency of the data.



Scale
1:500,000

